



Midway Metals

the stainless steel innovators

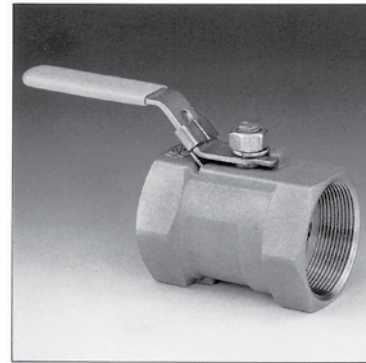
PRODUCTS & SERVICES CATALOGUE

VALVES

9TH EDITION

1 PIECE 800 WOG BALL VALVE - THREADED

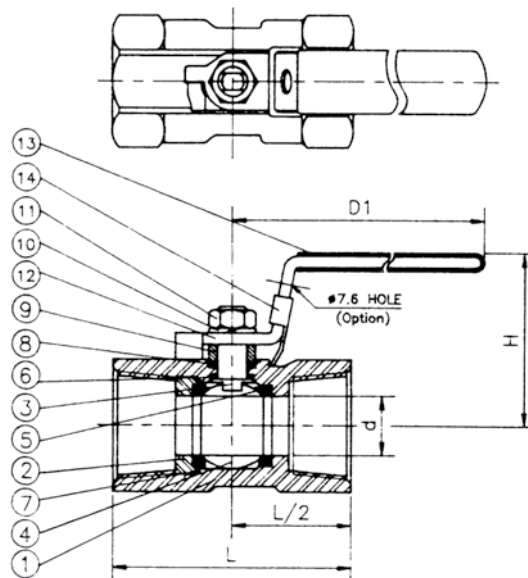
SPECIFICATIONS:	INVESTMENT CAST BODY & END CAP
END TYPE:	THREADED BSP OR NPT BOTTOM-LOADED, BLOW-OUT-PROOF STEM, ADJUSTABLE STEM PACKING STAINLESS STEEL HANDLE WITH VINYL GRIP
OPTION:	LOCKING DEVICE
APPLICATIONS:	FOR GENERAL CHEMICAL & INDUSTRIAL SERVICES
PRESSURE RATING:	800 PSI WOG (NON-SHOCK)
STEAM RATING:	150 PSI WSP
TEMPERATURE RANGE:	-29°C + 200°C



MATERIALS LIST

NO.	PART NAME	SPECIFICATION
1	BODY	ASTM A351 GR.CF8M
2	CAP	STAINLESS STEEL 316
3	STEM	STAINLESS STEEL 316
4	BALL	ASTM A351 GR.CF8M
5	BALL SEAT	PTFE
6	THRUST WASHER	PTFE
7	CAP SEAT	PTFE
8	PACKING	PTFE
9	GLAND	STAINLESS STEEL 304
10	WASHER	STAINLESS STEEL 304
11	HANDLE NUT	STAINLESS STEEL 304
12	HANDLE	STAINLESS STEEL 304
13	HANDLE SLEEVE	VINYL GRIP
14*	LOCKING PLATE	STAINLESS STEEL 304

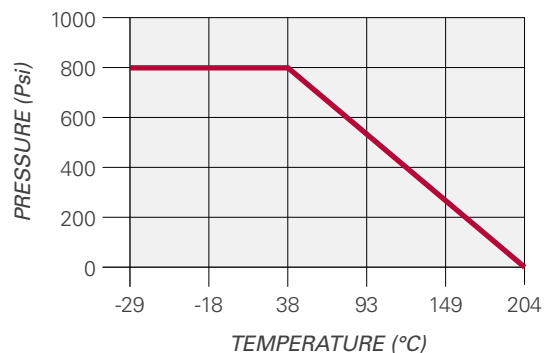
(*) Option



DIMENSIONS (mm)

SIZE	d	L	H	D1	Cv FACTOR
Inch					
1/4	5	39	36	63	1
3/8	7	44.5	37	74	2.5
1/2	9.2	56.5	44	91	5.5
3/4	12.5	58.5	47	91	10
1	15	71.5	51	106	15.5
1 1/4	20	78.5	54	106	20
1 1/2	25	83.5	67	129	37
2	32	100	72	129	60

PRESSURE TEMPERATURE RATINGS



2 PIECE FULL PORT 1000 WOG BALL VALVE - THREADED

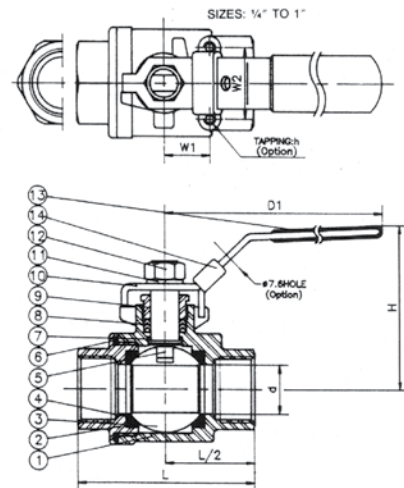
SPECIFICATIONS:	INVESTMENT CAST BODY & END CAP
END TYPE:	THREADED BSP OR NPT BOTTOM-LOADED, BLOW-OUT-PROOF STEM, ADJUSTABLE STEM PACKING EASY ACTUATOR MOUNTING STAINLESS STEEL HANDLE WITH VINYL GRIP
OPTION:	LOCKING DEVICE
APPLICATIONS:	FOR GENERAL CHEMICAL & INDUSTRIAL SERVICES
PRESSURE RATING:	1000 PSI WOG (NON-SHOCK)
STEAM RATING:	150 PSI WSP
TEMPERATURE RANGE:	-29°C + 200°C



MATERIALS LIST

NO.	PART NAME	SPECIFICATION
1	BODY	ASTM A351 GR.CF8M
2	END CAP	ASTM A351 GR.CF8M
3	BALL	ASTM A351 GR.CF8M
4	BALL Seats	PTFE
5	STEM	S.S.316
6	END SEAL	PTFE
7	THRUST WASHER	PTFE
8	STEM PACKINGS	PTFE
9	GLAND	STAINLESS STEEL 304
10	HANDLE	STAINLESS STEEL 304
11	HANDLE WASHER	STAINLESS STEEL 304
12	HANDLE NUT	STAINLESS STEEL 304
13	HANDLE SLEEVE	VINYL GRIP
14*	LOCKING PLATE	STAINLESS STEEL 304

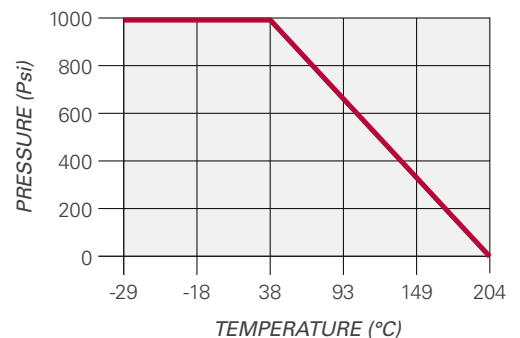
(*) Option



DIMENSIONS (mm)

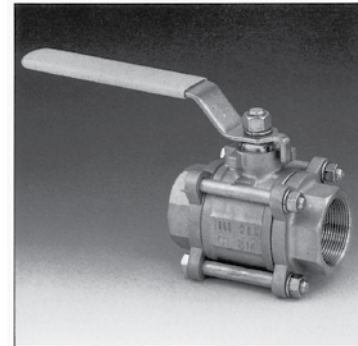
SIZE	d	L	H	D1	W1	W2	h	Cv FACTOR
Inch								
1/4	11.0	59.5	50	97	12.7	28.5	10-24 UNC	6
3/8	12.7	60.5	50	97	12.7	28.5	10-24 UNC	12
1/2	15	64	60	126	12.7	28.5	10-24 UNC	19
3/4	20	76	63	126	22.4	35.0	10-24 UNC	37
1	25	90.2	80	145	22.4	35.0	10-24 UNC	64
1 1/4	32	98.8	84	145	25.4	38.1	1/4-20 UNC	103
1 1/2	38	116	96	204	25.4	38.1	1/4-20 UNC	143
2	50.8	135.5	104	204	25.4	38.1	1/4-20 UNC	360
2 1/2	65	163	144	248	N/A	58.0	1/4-20 UNC	440
3	80	191	156	248	N/A	70.0	1/4-20 UNC	520

PRESSURE TEMPERATURE RATINGS



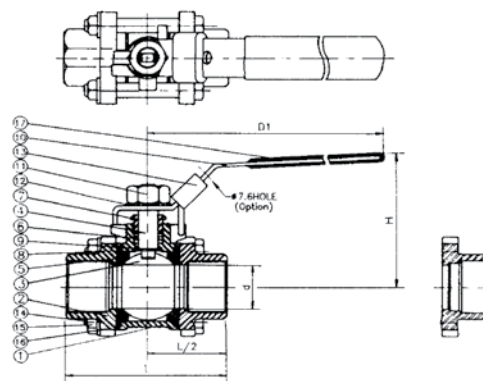
3 PIECE 1000 WOG BALL VALVE - THREADED

SPECIFICATIONS:	INVESTMENT CAST BODY & END CAP
END TYPE:	THREADED BSP OR NPT, BUTTWELD, SOCKET WELD 3PC DESIGN FOR FAST INSTALLATION & SIMPLE MAINTENANCE, BOTTOM-LOADED, BLOW-OUT-PROOF STEM, ADJUSTABLE STEM PACKING STAINLESS STEEL HANDLE WITH VINYL GRIP
OPTION:	LOCKING DEVICE
APPLICATIONS:	FOR GENERAL CHEMICAL & INDUSTRIAL SERVICES
PRESSURE RATING:	1000 PSI WOG (NON-SHOCK)
STEAM RATING:	150 PSI WSP
TEMPERATURE RANGE:	-29°C + 200°C



MATERIALS LIST

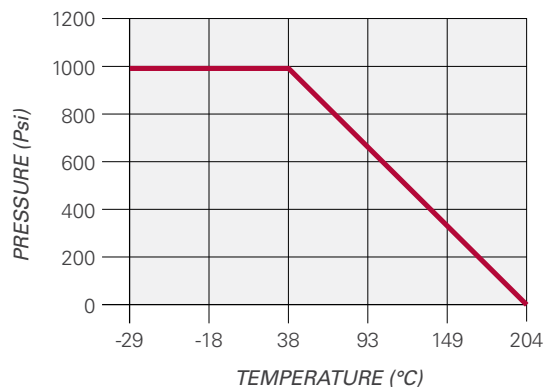
NO.	PART NAME	SPECIFICATION
1	BODY	ASTM A351 GR.CG8M
2	END CAPS	ASTM A351 GR.CG8M
3	BALL	ASTM A351 GR.CG8M
4	STEM	STAINLESS STEEL 316
5	BALL SEATS	PTFE
6	STEM PACKING	PTFE
7	GLAND	STAINLESS STEEL 304
8	END SEALS	PTFE
9	THRUST WASHER	PTFE
10	HANDLE	STAINLESS STEEL 304
11	HANDLE NUT	STAINLESS STEEL 304
12	HANDLE WASHER	STAINLESS STEEL 304
13	LOCKING PLATE	STAINLESS STEEL 304
14	BOLTS	STAINLESS STEEL 304
15	BOLT NUTS	STAINLESS STEEL 304
16	BOLT WASHERS	STAINLESS STEEL 304
17	HANDLE SLEEVE	VINYL GRIP



DIMENSIONS (mm)

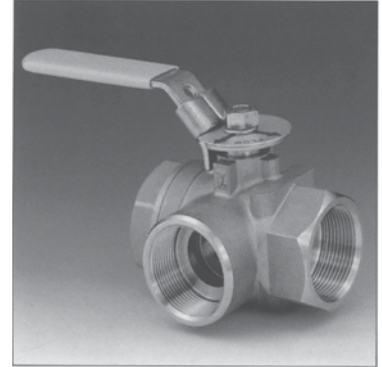
SIZE	d	L	H	D1	Cv FACTOR
Inch					
1/4	11.2	65	50	97	6
3/8	12.7	65	50	97	12
1/2	16	71	60	126	19
3/4	20	85	63	126	37
1	25	95	80	145	64
1 1/4	32	112	86	145	103
1 1/2	38.1	123	94	204	143
2	50.8	141	104	204	360
2 1/2	65	173	140	248	440
3	80	192	152	248	520
4	100	225	180	292	820

PRESSURE TEMPERATURE RATINGS



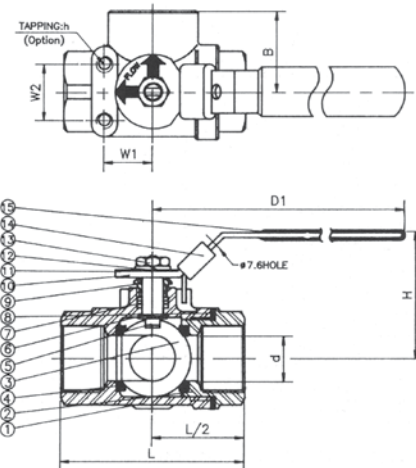
3 WAY REDUCED PORT 1000 WOG BALL VALVE - THREADED 'L' PORT

SPECIFICATIONS:	INVESTMENT CAST BODY & END CAP
ENDTYPE:	THREADED BSP OR NPT BOTTOM-LOADED, BLOW-OUT-PROOF STEM, ADJUSTABLE STEM PACKING, REINFORCED PTFE MINIMIZE SEAT DISTORTION, EASY ACTUATOR MOUNTING, STAINLESS STEEL HANDLE WITH VINYL GRIP
OPTION:	LOCKING DEVICE
APPLICATIONS:	FOR GENERAL CHEMICAL & INDUSTRIAL SERVICES
PRESSURE RATING:	1000 PSI WOG (NON-SHOCK)
STEAM RATING:	150 PSI WSP
TEMPERATURE RANGE:	-29°C + 200°C



MATERIALS LIST

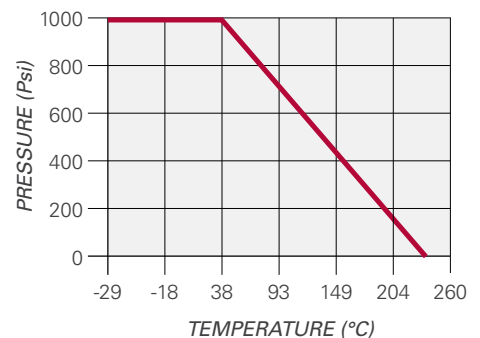
NO.	PART NAME	SPECIFICATION
1	BODY	ASTM A351 GR.CF8M
2	END CAP	ASTM A351 GR.CF8M
3	BALL	ASTM A351 GR.CF8M
4	BALL SEATS	REINFORCED PTFE
5	STEM	STAINLESS STEEL 316
6	THRUST WASHER	REINFORCED PTFE
7	STEM PACKINGS	REINFORCED PTFE
8	END SEAL	REINFORCED PTFE
9	GLAND	STAINLESS STEEL 304
10	HANDLE	STAINLESS STEEL 304
11	FLOW INDICATOR PLATE	ALUMINIUM
12	HANDLE WASHER	STAINLESS STEEL 304
13	HANDLE NUT	STAINLESS STEEL 304
14	LOCKING PLATE	STAINLESS STEEL 304
15	HANDLE SLEEVE	VINYL GRIP



DIMENSIONS (mm)

SIZE	d	L	H	D1	B	W1	W2	h	Cv FACTOR
Inch									
3/8	10.0	64	53	97	32	22.4	35.0	10-24 UNC	6.0
1/2	12.7	64	53	97	32	22.4	35.0	10-24 UNC	6.0
3/4	16.0	76	63	126	38	22.4	35.0	10-24 UNC	12.0
1	20.0	87	66	126	43.5	22.4	35.0	10-24 UNC	14.0
1 1/4	25.0	96	81	145	48	22.4	35.0	10-24 UNC	24.0
1 1/2	32.0	114	83	145	57	25.4	38.1	1/4-20 UNC	30.0
2	38.1	142	96	204	71	25.4	38.1	1/4-20 UNC	50.0

PRESSURE TEMPERATURE RATINGS



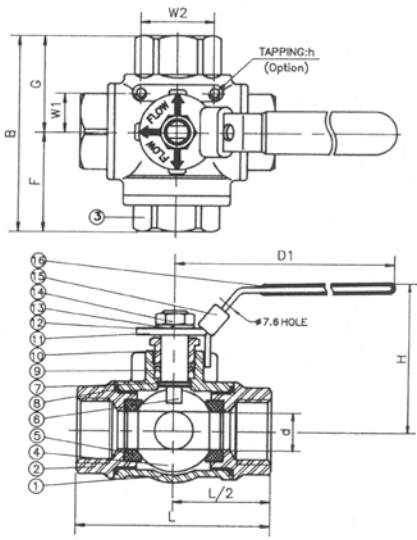
3 WAY REDUCED PORT 1000 WOG BALL VALVE - THREADED 'T' PORT

SPECIFICATIONS:	INVESTMENT CAST BODY & END CAP
END TYPE:	THREADED BSP OR NPT, BOTTOM-LOADED, BLOW-OUT-PROOF STEM, ADJUSTABLE STEM PACKING, REINFORCED PTFE MINIMIZE SEAT DISTORTION, EASY ACTUATOR MOUNTING, STAINLESS STEEL HANDLE WITH VINYL GRIP
OPTION:	LOCKING DEVICE
APPLICATIONS:	FOR GENERAL CHEMICAL & INDUSTRIAL SERVICES
PRESSURE RATING:	1000 PSI WOG (NON-SHOCK)
STEAM RATING:	150 PSI WSP
TEMPERATURE RANGE:	-29°C + 200°C



MATERIALS LIST

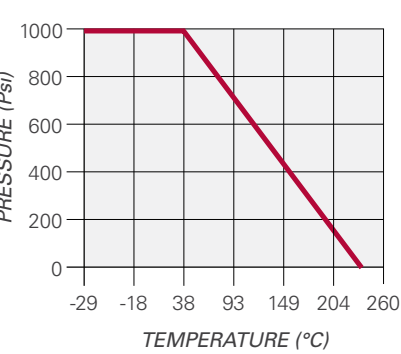
NO.	PART NAME	SPECIFICATION
1	BODY	ASTM A351 GR.CF8M
2	END CAP	ASTM A351 GR.CF8M
3	BLIND CAP	ASTM A351 GR.CF8M
4	BALL	ASTM A351 GR.CF8M
5	BALL SEATS	REINFORCED PTFE
6	STEM	STAINLESS STEEL 316
7	THRUST WASHER	REINFORCED PTFE
8	END SEAL	REINFORCED PTFE
9	STEM PACKINGS	REINFORCED PTFE
10	GLAND	STAINLESS STEEL 304
11	HANDLE	STAINLESS STEEL 304
12	FLOW INDICATOR PLATE	ALUMINIUM
13	HANDLE WASHER	STAINLESS STEEL 304
14	HANDLE NUT	STAINLESS STEEL 304
15	LOCKING PLATE	STAINLESS STEEL 304
16	HANDLE SLEEVE	VINYL GRIP



DIMENSIONS (mm)

SIZE	d	L	H	D1	B	F	G	W1	W2	h
1/2	12.7	75	59	126	71	33.5	37.5	22.4	35.0	10-24 UNC
3/4	16.0	85	64	126	81.5	39.0	42.5	22.4	35.0	10-24 UNC
1	20.0	100	80	145	102	50.5	51.5	22.4	35.0	10-24 UNC
1 1/4	25.0	115	90	145	108.5	51.0	57.5	22.4	35.0	10-24 UNC
1 1/2	32.0	125	96	204	121	58.0	63.0	25.4	38.1	1/4-20 UNC
2	38.1	148	106	204	138.5	65.5	73.0	25.4	38.1	1/4-20 UNC

PRESSURE TEMPERATURE RATINGS



VALVES

WOG CHECK VALVE / Y STRAINER

SPECIFICATIONS: INVESTMENT CAST BODY & BONNET (SOLUTION TREATED)
HIGH PERFORMANCE & LOW COST

END TYPE: THREADED BSP OR NPT SS316
STAINLESS STEEL SCREEN / BONNET SWING TYPE DISC

APPLICATIONS: FOR GENERAL CHEMICAL
& INDUSTRIAL SERVICES

STEAM RATING: 150 PSI WSP

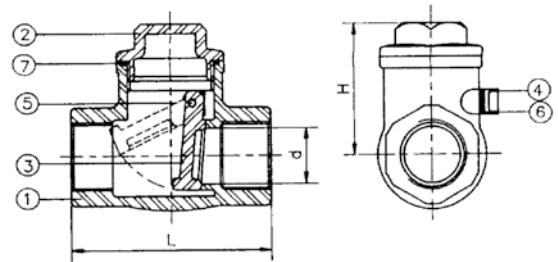
TEMPERATURE RANGE: +232°C MAX

200 WOG SWING CHECK VALVE THREADED

PRESSURE RATING: 200 PSI WOG (NON-SHOCK)

MATERIALS LIST

NO.	PART NAME	SPECIFICATION
1	BODY	ASTM A351 GR.CF8M
2	CAP	ASTM A351 GR.CF8M
3	DISC	ASTM A351 GR.CF8M
4	PLUG	STAINLESS STEEL 316
5	PIN	STAINLESS STEEL 316
6	PLUG GASKET	PTFE
7	GASKET	REINFORCED PIPE



DIMENSIONS (mm)

SIZE	d	L	H	Cv FACTOR
Inch				
1/2	15	65	44	6.9
3/4	20	80	53	16.3
1	25	90	58	30
1 1/4	32	105	62	49
1 1/2	40	120	73	72
2	50	141	78	130

PRESSURE TEMPERATURE RATINGS

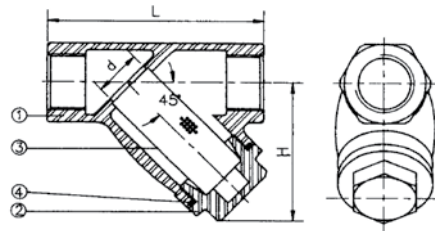
Below 120°C non-shock water 200psi (14kgf/cm²) max
Below 220°C air, water, oil, gas 150psi (10kgf/cm²) max
Saturated steam 150 psi (10kgf/cm²) max

800 WOG Y STRAINER THREADED

PRESSURE RATING: 800 PSI WOG (NON-SHOCK)

MATERIALS LIST

NO.	PART NAME	SPECIFICATION
1	BODY	ASTM A351 GR.CF8M
2	BOTTOM PLUG	ASTM A351 GR.CF8M
3	SCREEN	STAINLESS STEEL 316
4	GASKET	REINFORCED PIPE



DIMENSIONS (mm)

SIZE	d	L	H	Cv FACTOR
Inch				
1/4	15	78	50	3.5
3/8	15	78	50	3.5
1/2	15	78	50	3.5
3/4	20	93	60	6.5
1	25	108	70	10
1 1/4	32	128	82	19
1 1/2	40	143	92	26
2	50	173	118	45

PRESSURE TEMPERATURE RATINGS

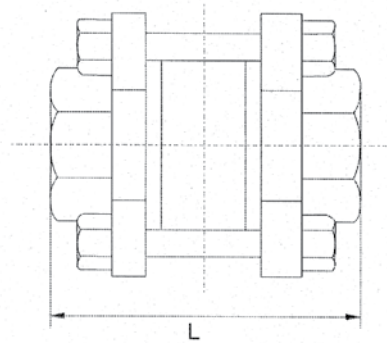
Below 120°C non-shock water 800psi (21kgf/cm²) max
Below 220°C air, water, oil, gas 150psi (10kgf/cm²) max
Saturated steam 150 psi (10kgf/cm²) max

1000 WOG SPRING CHECK VALVE

SPECIFICATIONS:	3 PIECE INVESTMENT CAST BODY & END CAP
END TYPE:	THREADED BSP OR NPT
PRESSURE RATING:	1000 PSI WOG (NON SHOCK)
APPLICATIONS:	FOR GENERAL CHEMICAL & INDUSTRIAL SERVICES
STEAM RATING:	150 PSI WSP
TEMPERATURE RANGE:	-29°C TO 200°C MAX

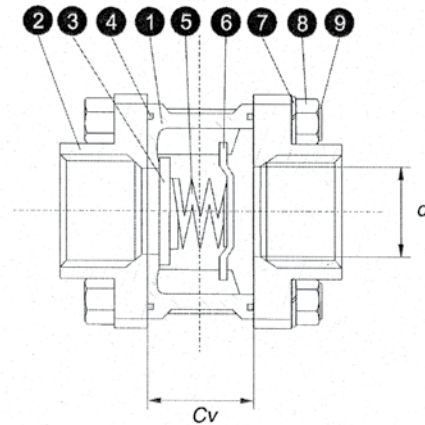
MATERIALS LIST

NO.	PART NAME	SPECIFICATION
1	BODY	ASTM A351 GR.CF8M
2	END CAP	ASTM A351 GR.CF8M
3	DISC	STAINLESS STEEL T-316
4	BODY SEAL	15% GF PTFE
5	SPRING	300 SERIES STAINLESS STEEL
6	SPRING HOLDER	STAINLESS STEEL T-316
7	WASHER	304
8	NUT	304
9	BOLT	304



DIMENSIONS (mm)

SIZE	d	L	H	Cv FACTOR
Inch				
1/4	10	56	8	14
3/8	10	56	10	14
1/2	14	65	15	18
3/4	18.1	70	20	22
1	24.2	78	25	27.5
1 1/4	30.2	96	32	32
1 1/2	36.2	102	40	37
2	48.3	118	50	47
2 1/2	63	145	65	47
3	76	156	80	55
4	98	185	100	70



PRESSURE TEMPERATURE RATINGS

Below 120°C non-shock water	300psi (21kgf/cm ²) max
Below 220°C air, water, oil, gas	150psi (10kgf/cm ²) max
Saturated steam	150 psi (10kgf/cm ²) max



**AUSTRALIA'S LARGEST
INDEPENDENT
STAINLESS STOCKISTS**

HEAD OFFICE & COIL CENTRE

Street: 56 Business Street YATALA QLD 4207
Postal: PO Box 621 BEENLEIGH QLD 4207 AUSTRALIA

P (07) 3382 9500 | **F** (07) 3807 8150
E headoffice@midwaymetals.com.au

ALBURY

Prospero Court ALBURY NSW 2640
P (02) 6041 4000 | **F** (02) 6041 4422
E albury@midwaymetals.com.au

SYDNEY

24-28 Lockwood Road ERSKINE PARK NSW 2759
P (02) 9670 8900 | **F** (02) 9834 2441
E sydney@midwaymetals.com.au

BRISBANE

Corner Rom & Binary Streets YATALA QLD 4207
P (07) 3287 2811 | **F** (07) 3807 2687
E brisbane@midwaymetals.com.au

TOWNSVILLE

331-335 Woolcock Street GARBUTT QLD 4814
P (07) 4728 8777 | **F** (07) 4728 8778
E townsville@midwaymetals.com.au

MELBOURNE

33 Tatterson Road DANDENONG VIC 3175
P (03) 9791 5111 | **F** (03) 9791 5333
E melbourne@midwaymetals.com.au

AUCKLAND

P +64 9 424 4194 | **F** +64 9 424 4194
E auckland@midwaymetals.com.au

NEWCASTLE

12 Sandringham Avenue THORTON NSW 2322
P (02) 4966 3800 | **F** (02) 4966 3811
E newcastle@midwaymetals.com.au

VIETNAM

P +84 3 5184 8468 | **F** +84 3 5184 8456
E info@midwaymetals.com.vn

PERTH

471 Victoria Road MALAGA WA 6090
P (08) 9248 6944 | **F** (08) 9248 6955
E perth@midwaymetals.com.au

www.midwaymetals.com.au

DISCLAIMER

The technical information contained in this publication should not be relied on for specific applications without first securing competent advice. Whilst all care is taken to ensure that the information contained herein is accurate and up-to-date, Midway Metals Pty Ltd does not warrant its accuracy or completeness and does not accept liability for errors or omissions.

COPYRIGHT

All rights reserved. No part of this publication may be reproduced or distributed in any form or by any means, or stored in a database or retrieval system, without prior written permission of Midway Metals.