



Midway Metals

the stainless steel innovators

***PRODUCTS & SERVICES
CATALOGUE***

13TH EDITION

WELDED ROUND TUBE

SPECIFICATIONS: ASTM A554
ASTM A269
AS1528

LENGTHS: 6 METRES

FINISH: MILL FINISH W
POLISHED 320 GRIT P
POLISHED MIDWAY MIRROR M
ANNEALED POLISHED 600 GRIT PA
FOOD POLISHED 320 GRIT F



SIZE mm		T304					T316				
OD	WT	W	P	M	PA	F	W	P	M	F	PA
6.35	0.7	☆	☆		☆						
6.35	0.9	☆	☆		☆						☆
7.94	0.9	☆	☆		☆						
9.53	0.9	☆	★		☆						
9.53	1.2	☆	★		☆		☆	☆			☆
9.53	1.6	☆	★		★		☆	★	★		☆
12.7	1.2	☆	★		☆		☆	☆			☆
12.7	1.6	☆	★		☆		☆	★	★		★
15.9	1.2	☆	★		☆		☆	☆			☆
15.9	1.6	☆	★		☆		☆	★	★		★
19.05	0.9	☆	★		☆						
19.05	1.2		★		☆		☆	☆	★		☆
19.05	1.6	☆	★		☆		☆	★	★		★
22.2	1.2	☆	☆		☆		☆	☆	★		☆
22.2	1.6	☆	★		☆		☆	★	★		★
25.4	0.9	☆	★		☆		☆	☆	☆		☆
25.4	1.2	☆	★		☆		☆	☆	★		☆
25.4	1.6	☆	★		☆	★	☆	★	★	★	★
28.6	1.2	☆	☆		☆		☆	☆	★		
28.6	1.6	☆	☆		☆		☆	☆	☆		
31.8	1.2	☆	★		☆	★	☆	☆	★		☆
31.8	1.6	☆	★		☆	★	☆	★	★	★	★
31.8	3.0								★		
38.1	1.2	☆	★		☆	★	☆	☆	☆		☆
38.1	1.6	☆	★		☆	★	☆	★	★	★	★
38.1	3.0			☆					★		
41.28	1.6		★						★		
44.4	1.2	☆	☆		☆						
44.4	1.6	☆	★	★	☆	☆	☆	☆	★		☆
50.8	1.2	☆	★		☆	★	☆	☆			☆
50.8	1.6	☆	★		☆	★	☆	★	★	★	★
50.8	2.0	☆	★					★	☆		
50.8	3.0			☆					★		
57.15	1.6							★			
63.5	1.2	☆	☆		☆						
63.5	1.6	☆	★		☆	★	☆	★	★	★	☆
63.5	2.0							★			
63.5	3.0								★		

ARCHITECTURAL TUBE

SPECIFICATIONS:	ASTM A554		
LENGTH:	6 METRES		
FINISH:	POLISHED MIRROR	M	
	POLISHED 400 grit P		

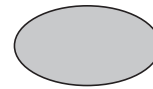
SLOTTED HAND RAIL

SIZE mm	T304	T316	
		P	M
50.8 x 1.5 - Single Slot	☆	★	★
63.5 x 1.5 - Single Slot	☆	★	★
76.2 x 1.5 - Single Slot	☆	★	★
50.8 x 1.5 - Double Slot	☆	★	★
50.8 x 1.5 - 90 Degree Slot	☆	★	★



OVAL / D TUBE

SIZE mm	T304	T316
	M	M
23 x 38 x 1.5mm - Oval	☆	★
28 x 46 x 1.5mm - Oval	☆	★
38 x 62 x 1.5mm - Oval	☆	★
42 x 75 x 1.5mm - Oval	☆	★



TRIANGULAR TUBE

SIZE mm	T304	T316
	M	M
37 x 25 x 1.5mm	☆	★

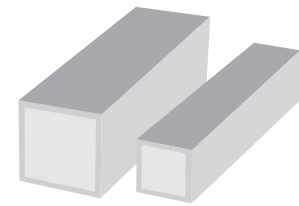


WELDED SQUARE & RECTANGLE TUBE

SPECIFICATIONS:	ASTM A554
LENGTH:	6 METRES
FINISH:	POLISHED 180 HAIRLINE SBP POLISHED 400 grit 400

SQUARE TUBE

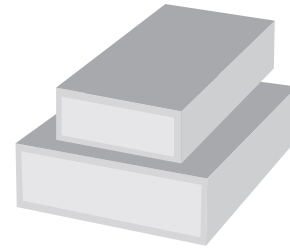
SIZE mm	T304	T316	
	SBP	SBP	400
12.7 x 12.7 x .9	☆		
12.7 x 12.7 x 1.2	★	☆	
19 x 19 x 1.2	★	☆	
19 x 19 x 1.6	★	★	★
22.2 x 22.2 x 1.2	★	☆	
22.2 x 22.2 x 1.6	☆	☆	
25.4 x 25.4 x 1.2	★	☆	
25.4 x 25.4 x 1.6	★	★	★
31.8 x 31.8 x 1.2	★	☆	
31.8 x 31.8 x 1.6	★	★	★
38.1 x 38.1 x 1.2	★	☆	
38.1 x 38.1 x 1.6	★	★	★
50.8 x 50.8 x 1.2	★	☆	
50.8 x 50.8 x 1.6	★	★	★



SIZE mm	T304	T316	
	SBP	SBP	400
25 x 25 x 2	★	★	☆
25 x 25 x 3	★	★	☆
32 x 32 x 2	★	★	☆
32 x 32 x 3	★	★	☆
38 x 38 x 2	★	☆	
38 x 38 x 3	★	★	★
40 x 40 x 3	★	☆	☆
50 x 50 x 2	★	☆	
50 x 50 x 3	★	★	★
50 x 50 x 5	★	★	☆
60 x 60 x 3	★	★	☆
80 x 80 x 2	★	☆	
80 x 80 x 3	★	★	☆
80 x 80 x 5	★	★	☆
100 x 100 x 3	★	★	☆
100 x 100 x 5	★	★	☆
150 x 150 x 3	★	★	☆
150 x 150 x 5	★	★	☆
150 x 150 x 6	★	☆	☆
150 x 150 x 8	★	☆	☆

RECTANGLE TUBE

SIZE	T304	T316	
	SBP	SBP	400
38.1 x 25.4 x 1.6	☆	☆	
50.8 x 25.4 x 1.2	★	☆	
50.8 x 25.4 x 1.6	★	★	★
80 x 40 x 1.6	★	☆	☆
76.2 x 25.4 x 2.0	★	☆	☆
150 x 100 x 3.0	★	☆	☆

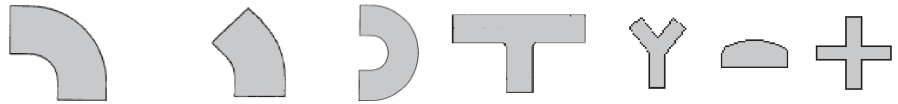


SIZE	T304	T316	
	SBP	SBP	400
50 x 10 x 2	☆		☆
50 x 25 x 3	★	★	★
60 x 40 x 3	★	★	
80 x 40 x 3	★	★	☆
100 x 50 x 2	★	☆	
100 x 50 x 3	★	★	☆
100 x 50 x 5	★	★	☆
150 x 50 x 6	☆	☆	★
150 x 75 x 5	★	☆	☆
150 x 100 x 5	★	★	☆
150 x 100 x 6	☆	★	★
200 x 100 x 5	★	☆	☆
200 x 100 x 6	☆	★	☆

TUBE FITTINGS

SPECIFICATIONS: AUSTRALIAN STANDARD 1528
PART 3 - 1975
BENDS CLR 1.50

FINISH: BENDS UNPOLISHED & POLISHED
OTHERS POLISHED

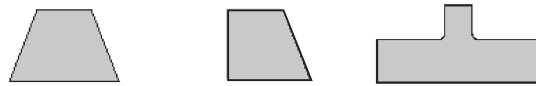


SIZE		THICK	90° BEND		45° BEND		180° BEND	EQUAL TEE		Y PIECE	CAP	CROSS
Inch	mm	mm	304	316	304	316	316	304	316	316	316	316
1/2	12.7	1.6		★		★			★			
5/8	15.88	1.6		★								
3/4	19.05	1.6	★	★		★	☆		★		★	
1	25.4	1.6	★	★	★	★	★	★	★	☆	★	☆
1 1/4	31.8	1.6	★	★		★	★	★	★	☆	★	☆
1 1/2	38.1	1.6	★	★	★	★	★	★	★	☆	★	★
1 3/4	44.45	1.6		★								
2	50.8	1.6	★	★	★	★	★	★	★	★	★	★
2 1/2	63.5	1.6	★	★	★	★	★	★	★	☆	★	☆
3	76.2	1.6	★	★	★	★	★	★	★	★	★	★
3 1/2	88.9	1.6		★								
4	101.6	1.6	★	★	★	★	★	★	★	☆	★	☆
5	127	1.6	★	★	☆	★	☆	★	★	☆	☆	☆
6	152.4	1.6	★	★	☆	★	☆	★	★	☆	★	☆
8	203.2	1.6	☆	☆	☆	☆	☆	☆	☆		★	
10	254	1.6	☆	☆	☆	☆	☆		☆			
12	305	1.6	☆	☆	☆	☆	☆		☆			
4	101.6	2		★					☆			
5	127	2	★	★					☆			
6	152.4	2	★	★	★	★			☆			
8	203.2	2	★	★					☆			
10	254	2	★	★					☆			
12	305	2	★	★					☆			

REDUCING TUBE FITTINGS

SPECIFICATIONS: AUSTRALIAN STANDARD 1528
PART 3 - 1975

FINISH: POLISHED



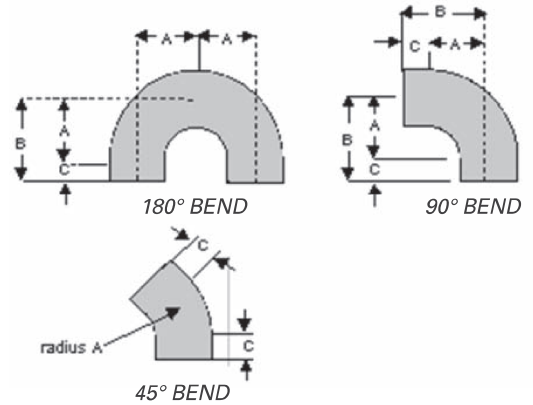
OD		TK	CONCENTRIC REDUCER	ECCENTRIC REDUCER	REDUCING TEE
mm	Inch	mm			
19.1 x 12.7	3/4 x 1/2	1.6	★	☆	☆
25.4 x 12.7	1 x 1/2	1.6	★	☆	★
25.4 x 19.1	1 x 3/4	1.6	★	★	★
31.8 x 19.1	1 1/4 x 3/4	1.6	★	☆	☆
31.8 x 25.4	1 1/4 x 1	1.6	★	☆	☆
38.1 x 12.7	1 3/4 x 1/2	1.6	★	☆	☆
38.1 x 19.1	1 1/2 x 3/4	1.6	★	☆	☆
38.1 x 25.4	1 1/2 x 1	1.6	★	★	★
38.1 x 31.8	1 1/2 x 1 1/4	1.6	★	★	☆
50.8 x 12.7	2 x 1/2	1.6	★	☆	☆
50.8 x 19.1	2 x 3/4	1.6	★	★	★
50.8 x 25.4	2 x 1	1.6	★	★	★
50.8 x 31.8	2 x 1 1/4	1.6	★	★	★
50.8 x 38.1	2 x 1 1/2	1.6	★	★	★
63.5 x 19.1	2 1/2 x 3/4	1.6	☆	☆	☆
63.5 x 25.4	2 1/2 x 1	1.6	★	★	★
63.5 x 31.8	2 1/2 x 1 1/4	1.6	★	★	☆
63.5 x 38.1	2 1/2 x 1 1/2	1.6	★	★	☆
63.5 x 50.8	2 1/2 x 2	1.6	★	★	★
76.2 x 19.1	3 x 3/4	1.6	☆	☆	☆
76.2 x 25.4	3 x 1	1.6	★	★	★
76.2 x 31.8	3 x 1 1/4	1.6	★	☆	☆
76.2 x 38.1	3 x 1 1/2	1.6	★	★	☆
76.2 x 50.8	3 x 2	1.6	★	★	★
76.2 x 63.5	3 x 2 1/2	1.6	★	★	★
101.6 x 25.4	4 x 1	1.6	★	☆	☆
101.6x38.1	4 x 1 1/2	1.6	★	☆	☆
101.6 x 50.8	4 x 2	1.6	★	★	★
101.6 x 63.5	4 x 2 1/2	1.6	★	★	★
101.6 x 76.2	4 x 3	1.6	★	★	★
127 x 50.8	5 x 2	1.6	★	☆	☆
127. x 63.5	5 x 2 1/2	1.6	☆	★	☆
127 x 76.2	5 x 3	1.6	★	★	☆
127 x 101.6	5 x 4	1.6	★	★	☆
152.4 x 25.4	6 x 1	1.6	☆	☆	☆
152.4 x 50.8	6 x 2	1.6	★	★	☆
152.4 x 63.5	6 x 2 1/2	1.6	★	★	☆
152.4 x 76.2	6 x 3	1.6	★	★	☆
152.4 x 101.6	6 x 4	1.6	★	★	☆
152.4 x 127	6 x 5	1.6	★	★	☆
203.2 x 101.6	8 x 4	1.6	★	★	☆
203.2 x 127	8 x 5	1.6	★	☆	☆
203.2 x 152.4	8 x 6	1.6	★	☆	☆

TECHNICAL DATA

TUBE FITTING DIMENSIONS

CENTRE-TO-FACE DIMENSIONS OF 45°, 90° & 180° TUBE BENDS

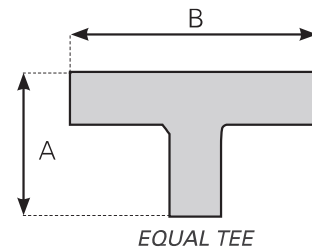
NOMINAL SIZE	CENTRE-TO-FACE DIMENSIONS			
	A	B	C	WALL
mm	mm	mm	mm	mm
12.7	19.1	49.1	30	1.6
19.1	28.6	58.6	30	1.6
25.4	38.1	68.1	30	1.6 / 2
31.8	47.7	77.7	30	1.6 / 2
38.1	57	87	30	1.6 / 2
50.8	76.2	106.2	30	1.6 / 2
63.5	95	125	30	1.6 / 2
76.2	114.2	144.2	30	1.6 / 2
101.6	152.4	182.4	30	1.6 / 2
127	190.5	230.5	40	1.6 / 2
152.4	228.5	268.5	40	1.6 / 2
203.2	304.8	334.8	40	1.6 / 2



NOTE: C = The Straight End Extension

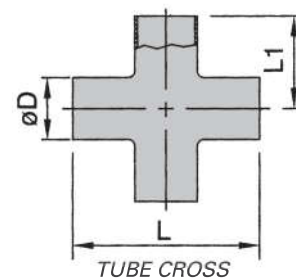
AS SHORT TEE / EQUAL TEE

NOMINAL SIZE	CENTRE-TO-FACE DIMENSIONS			
	Size	ϕD	D	L1
	mm			
1/2	12.7	38.2	19.1	
3/4	19.1	57.2	28.6	
1.0	25.4	76.2	38.1	
1 1/4	31.8	95.4	47.7	
1.5	38.1	114	57.0	
2.0	50.8	152.4	76.2	
2.5	63.5	190	95.0	
3.0	76.2	228.4	114.2	
4.0	101.6	304.8	152.4	



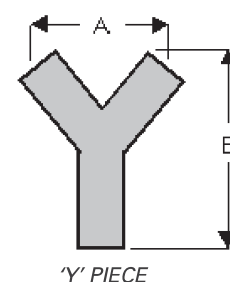
DIMENSIONS OF TUBE CROSS

NOMINAL SIZE	CENTRE-TO-FACE DIMENSIONS	
	A	B
mm	mm	mm
25.4	76.2	38.1
31.8	114	57.0
50.8	152.4	76.2
76.2	228.4	114.2
101.6	304.8	152.4



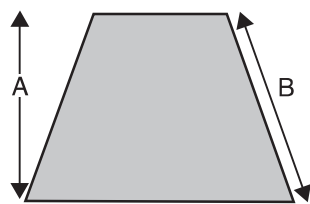
DIMENSIONS OF WELDED TYPE 'Y' PIECE

NOMINAL SIZE	CENTRE-TO-FACE DIMENSIONS	
	A	B
mm	mm	mm
25.4	88	72
31.8	110	90
38.1	132	108
50.8	176	143
63.5	220	179
76.2	264	215
101.6	352	287
127	359	440
152.4	430	529

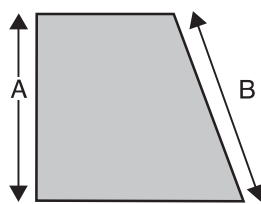


TECHNICAL DATA

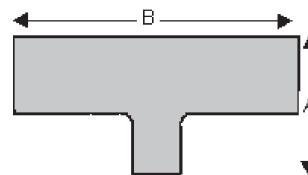
TUBE FITTING DIMENSIONS



CONCENTRIC REDUCER



ECCENTRIC REDUCER



REDUCING TEE

SIZE		TK	CONCENTRIC REDUCER		ECCENTRIC REDUCER		REDUCING TEE	
mm	Inch		A	B	A	B	A	B
19.1 X 12.7	3/4 x 1/2	1.6	20	20	20	22		
25.4 X 12.7	1 x 1/2	1.6	25	25	25	27		
25.4 X 19.1	1 x 3/4	1.6	25	25				
31.8 X 19.1	1 1/4 x 3/4	1.6	32	32				
31.8 X 25.4	1 1/4 x 1	1.6	32	32	32	34		
38.1 X 12.7	1 1/2 x 1/2	1.6	38	40	38	40		
38.1 X 19.1	1 1/2 x 3/4	1.6	38	38	38	40		
38.1 X 25.4	1 1/2 x 1	1.6	38	38	38	40	70	89
38.1 X 31.8	1 1/2 x 1 1/4	1.6	38	38	38	40		
50.8 X 12.7	2 x 1/2	1.6	51	54				
50.8 X 19.1	2 x 3/4	1.6	51	54	50	52		
50.8 X 25.4	2 x 1	1.6	51	52	50	53	83	90
50.8 X 31.8	2 x 1 1/4	1.6	51	52	50	53	93	120
50.8 X 38.1	2 x 1 1/2	1.6	51	52	50	53	100	131
63.5 X 19.1	2 1/2 x 3/4	1.6	63	65				
63.5 X 25.4	2 1/2 x 1	1.6	63	65	63	65		
63.5 X 31.8	2 1/2 x 1 1/4	1.6	63	65	63	65		
63.5 X 38.1	2 1/2 x 1 1/2	1.6	63	63	63	65	114	133
63.5 X 50.8	2 1/2 x 2	1.6	63	63	63	65	130	178
76.2 x 19.1	3 x 3/4	1.6	76	80			107	110
76.2 X 25.4	3 x 1	1.6	76	80	76	80	111	100
76.2 x 31.8	3 x 1 1/4	1.6	76	80				
76.2 X 38.1	3 x 1 1/2	1.6	76	76	76	80	125	133
76.2 X 50.8	3 x 2	1.6	76	76	76	80	140	178
76.2 X 63.5	3 x 2 1/2	1.6	76	76	76	81	159	229
101.6 X 25.4	4 x 1	1.6	102	107	101	110		
101.6 X 38.1	4 x 1 1/2	1.6	102	107	101	110	154	133
101.6 X 50.8	4 x 2	1.6	102	103	101	110	171	178
101.6 X 63.5	4 x 2 1/2	1.6	102	103	101	110	188	229
101.6 X 76.2	4 x 3	1.6	102	103	101	110	189	254
127 X 50.8	5 x 2	1.6	127	132	127	138		
127. X 63.5	5 x 2 1/2	1.6	127	132	127	138		
127 X 76.2	5 x 3	1.6	127	127	127	140	218	254
127 X 101.6	5 x 4	1.6	127	127	127	140	218	292
152.4 X 38.1	6 x 1 1/2	1.6	153	165				
152.4 X 50.8	6 x 2	1.6	153	161	152	162		
152.4 X 63.5	6 x 2 1/2	1.6	153	158	152	165		
152.4 X 76.2	6 x 3	1.6	153	158	152	162	244	254
152.4 X 101.6	6 x 4	1.6	153	153	152	162	252	300
152.4 X 127	6 x 5	1.6	153	153	152	162	385	380
203.2 X 101.6	8 x 4	1.6	205	208	205	215	304	300
203.2 X 127	8 x 5	1.6	205	212	205	215	330	380
203.2 X 152.4	8 x 6	1.6	205	205	205	215	348	440

HYGIENIC FITTINGS

SPECIFICATIONS: BSM/RJT Fittings to AS1528, Part 4 - 1976

BSM/RJT FITTINGS



SIZE mm	ROUND SLOTTED NUT	HEX. NUT	PLAIN LINER	MALE PART	O-RING EPDM	O-RING TEFLON	O-RING VITON	CIP SEAL	BLANK CAP	BLANK NUT	ALUM. SPANNER
25.4	★	★	★	★	★	☆	★	★	★	☆	★
38.1	★	★	★	★	★	☆	★	★	★	☆	★
50.8	★	★	★	★	★	☆	★	★	★	☆	★
63.5	★	★	★	★	★	☆	★	★	★	☆	★
76.2	★	★	★	★	★	☆	★	★	★	☆	★
101.6	★	★	★	★	★	☆	★	★	★	☆	★
127.0	☆	★	★	★	★	☆	★	★	★	☆	★
152.4	☆	★	★	★	★	☆	★	★	★	☆	★

HYGIENIC FLAT FACE FITTINGS



SIZE mm	HEX. NUT	FLAT FACE LINER	MALE PART LIP REMOVED	SEAL EPDM	SEAL TEFLON
12.7	★	★	★	★	☆
19.05	★	★	★	★	☆
25.4	★	★	★	★	☆
38.1	★	★	★	★	☆
50.8	★	★	★	★	☆
63.5	★	★	★	★	☆
76.2	★	★	★	★	☆
101.6	★	★	★	★	☆
127.0	☆	☆	☆	☆	☆
152.4	★	★	★	★	☆

TUBE CLAMPS



SIZE mm	PLAIN	BOSSSED	LONG TANG	DOUBLE BOLTED
12.7				★
19.05	★	★		★
25.4	★	★	★	★
31.8	★	★	★	★
38.1	★	★	★	★
50.8	★	★	★	★
63.5	★	★	★	★
76.2	★	★	★	★
101.6	★	★	★	★
127.0	☆	☆	☆	★
152.4	★	★	★	★
203.2				★

SPECIFICATIONS: Triclover Fittings to AS1528, Part 2 - 1976

TRICLOVER FITTINGS



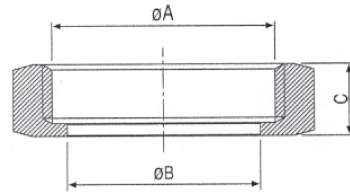
SIZE mm	CLAMP BODY	FERRULE LONG	BLANK CAP	SEAL EPDM	SEAL BUNA	SEAL TEFLON	SEAL VITON
19.05	★	★	★	★	☆	☆	☆
25.4	★	★	★	★	☆	☆	★
38.1	★	★	★	★	☆	☆	★
50.8	★	★	★	★	☆	☆	★
63.5	★	★	★	★	☆	☆	★
76.2	★	★	★	★	☆	☆	★
101.6	★	★	★	★	☆	☆	★
127.0	☆	☆	☆	☆	☆	☆	☆
152.4	★	★	★	★	☆	☆	★

TECHNICAL DATA

HYGIENIC FITTINGS

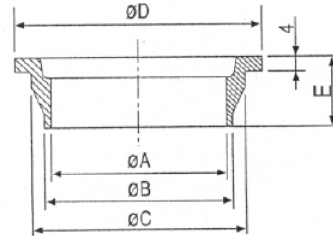
HEXAGONAL NUT

SIZE mm	A	B	C
25.4	42.266 x 8TPI WHIT	33.45	22.2
38.1	54.966 x 8TPI WHIT	46.0	22.2
50.8	67.920 x 6TPI WHIT	58.67	22.2
63.5	80.620 x 6TPI WHIT	71.4	22.2
76.2	93.320 x 6TPI WHIT	84.1	22.2
101.6	118.720 x 6TPI WHIT	109.7	22.2
127.0	144.000 x 6TPI WHIT	134.9	22.2
152.4	169.520 x 6TPI WHIT	163.0	22.2



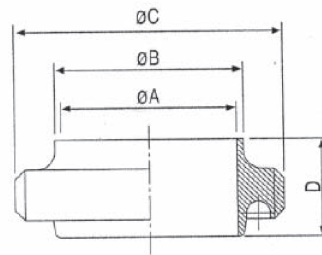
PLAIN LINER

SIZE mm	A	B	C	D	E
25.4	22.2	25.65	32.5	41.3	19.5
38.1	34.9	38.35	45.2	54.0	19.5
50.8	47.6	51.05	57.9	66.7	19.5
63.5	60.3	63.75	70.6	79.4	19.5
76.2	73.0	76.45	83.3	92.1	19.5
101.6	97.6	101.85	108.7	117.5	19.5
127.0	123.8	127.00	134.0	142.9	23.5
152.4	148.0	152.50	161.8	169.1	23.5



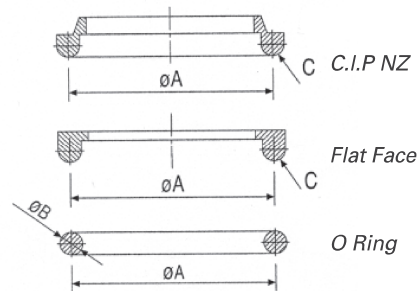
MALE PART

SIZE mm	A	B	C	D
25.4	22.2	25.65	45.72 x 8TPI WHIT	27
38.1	34.9	38.35	58.42 x 8TPI WHIT	27
50.8	47.6	51.05	72.72 x 6TPI WHIT	27
63.5	60.3	63.75	85.42 x 6TPI WHIT	27
76.2	73.0	76.45	98.12 x 6TPI WHIT	27
101.6	97.6	101.85	123.52 x 6TPI WHIT	27
127.0	123.8	127.00	148.30 x 6TPI WHIT	24
152.4	148.0	152.50	174.32 x 6TPI WHIT	24



O-RING (EPDM, TEFLON, VITON)

SIZE mm	A	B	C
25.4	33.3	6.6	3.2
38.1	46.0	6.6	3.2
50.8	58.7	6.6	3.2
63.5	71.4	6.6	3.2
76.2	84.1	6.6	3.2
101.6	109.5	6.6	3.2
127.0	134.9	6.6	3.2
152.4	162.6	6.6	3.2

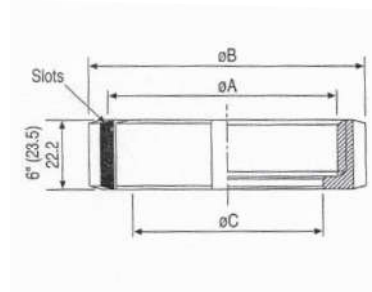


TECHNICAL DATA

HYGIENIC FITTINGS

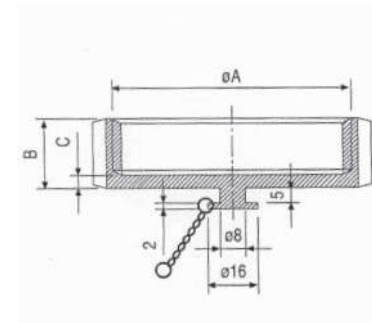
ROUND SLOTTED NUT

SIZE mm	A	B	C	SLOTS
25.4	42.266 x 8TPI WHIT	58.5	33.45	4
38.1	54.966 x 8TPI WHIT	74.0	46.0	4
50.8	67.920 x 6TPI WHIT	85.5	58.67	6
63.5	80.620 x 6TPI WHIT	98.5	71.4	6
76.2	93.320 x 6TPI WHIT	111.6	84.1	8
101.6	119.000 x 6TPI WHIT	138.0	109.7	8
152.4	169.520 x 6TPI WHIT	197.0	163.0	10



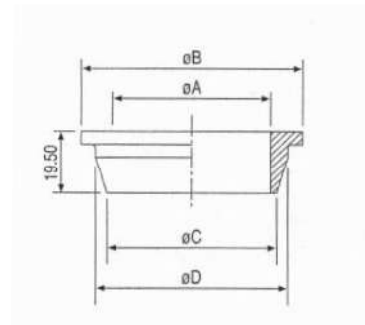
HEXAGONAL BLANK NUT

SIZE mm	A	B	C
25.4	42.266 x 8TPI WHIT	22.2	4
38.1	54.966 x 8TPI WHIT	22.2	4
50.8	67.920 x 6TPI WHIT	22.2	4
63.5	80.620 x 6TPI WHIT	22.2	4
76.2	93.320 x 6TPI WHIT	22.2	4
101.6	118.720 x 6TPI WHIT	22.2	4



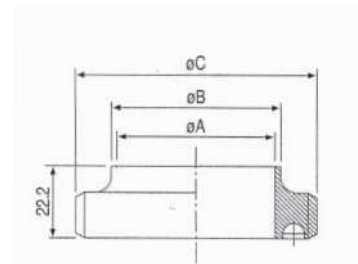
FLAT FACE LINER

SIZE mm	A	B	C	D
25.4	22.2	41.3	25.8	32.5
38.1	34.9	54.0	38.5	45.2
50.8	47.6	66.7	51.2	57.9
63.5	60.3	79.4	63.9	70.6
76.2	73.0	92.1	76.6	83.3
101.6	97.6	117.5	102.2	108.7



MALE PART (LIP REMOVED)

SIZE mm	A	B	C
25.4	22.2	25.65	45.72 x 8T WHIT
38.1	34.9	38.35	58.42 x 8T WHIT
50.8	47.6	51.05	72.72 x 6T WHIT
63.5	60.3	63.75	85.42 x 6T WHIT
76.2	73.0	76.45	98.12 x 6T WHIT
101.6	97.6	101.85	123.52 x 6T WHIT

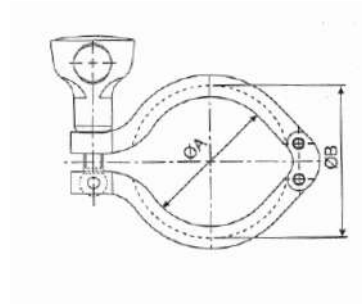


TECHNICAL DATA

TRICLOVER FITTINGS

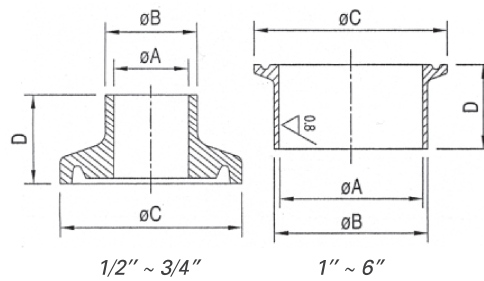
CLAMP HEAVY DUTY

SIZE mm	A	B
12.7 - 19.05	20	28
38.1	43.6	53.6
50.8	57	67
63.5	70.6	80.6
76.2	84	94
101.6	112	122
152.4	155	170



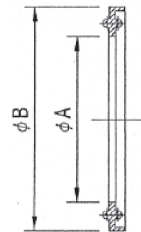
FERRULE LONG

SIZE mm	A	B	C	D
12.7	9.45	12.75	25.2	28.6
19.05	15.75	19.05	25.2	28.6
25.4	22.2	25.4	50.5	28.6
38.1	34.9	38.1	50.5	28.6
50.8	47.6	50.8	64.0	28.6
63.5	60.3	63.5	77.5	28.6
76.2	73.0	76.2	91.0	28.6
101.6	97.6	101.6	119.0	28.6
152.4	146.8	152.5	166.8	28.6



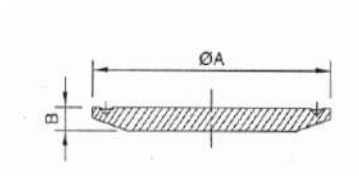
FLANGE SEAL

SIZE mm	A	B
25.4	22.8	52.7
38.1	35.8	52.7
50.8	48.8	66.2
63.5	60.5	79.7
76.2	73.1	93.2
101.6	97.8	121.2



BLANK CAP

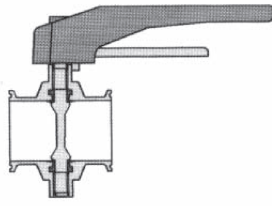
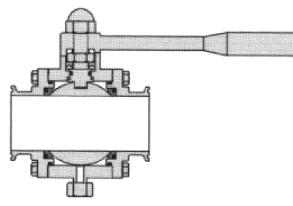
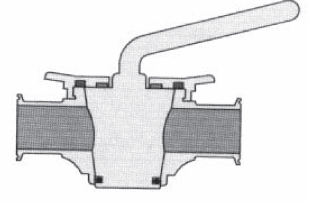
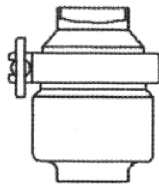
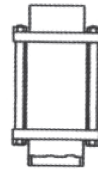
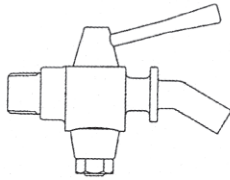
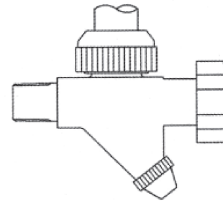
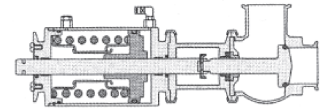
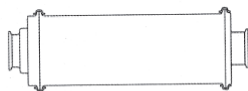
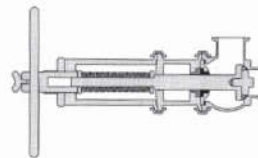
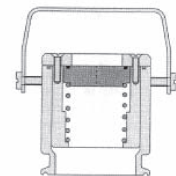
SIZE mm	A	B
12.7 - 19.05	25.2	5.0
25.4 - 38.1"	50.5	6.3
50.8	64.0	6.3
63.5	77.5	6.3
76.2	91.0	6.3
101.6	119.0	7.9
152.4	166.7	11.1



STANDARD SEAL

SIZE mm	A	B
12.7	21.8	9.9
19.05	21.8	16.3
25.4	50.0	22.7
38.1	50.0	35.9
50.8	63.5	48.6
63.5	76.2	61.3
76.2	88.9	74.0
101.6	118.0	98.6

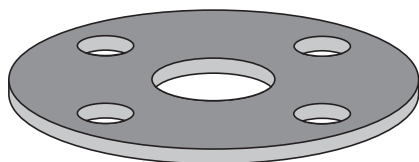


*BUTTERFLY VALVES**BALL VALVES**PLUG VALVES**CHECK VALVES**SIGHT GLASSES**SPRAY BALLS**SAMPLING VALVES**LEVEL GAUGES**SHUT OFF & DIVERT VALVES**FILTERS & STRAINERS**PRESSURE RELIEF VALVES**TANK VENTS*

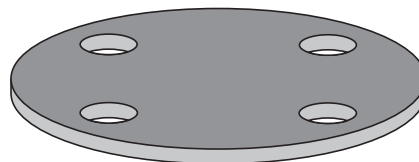
NOTE: A comprehensive hygienic valves and equipment catalogue is available upon request.

PLATE FLANGES – TUBE

SPECIFICATIONS:	AS2129 TABLE FLANGES	
TYPE:	SLIP-ON WELD BLIND	SOW BL
CLASS:	TABLE D, E, F & H	



SLIP-ON



BLIND

GRADE	SIZE I.D. mm	TABLE D		TABLE E		TABLE F		TABLE H	
		SLIP-ON	BLIND	SLIP-ON	BLIND	SLIP-ON	BLIND	SLIP-ON	BLIND
304L	12.7			★	★	☆	☆	☆	☆
	19.05			★	★	☆	☆	☆	☆
	25.4			★	★	☆	☆	☆	☆
	31.8			★	★	☆	☆	☆	☆
	38.1	★	★	★	★	☆	☆	☆	☆
	50.8	★	★	★	★	☆	☆	☆	☆
	63.5	★	★	★	★	☆	☆	☆	☆
	76.2	★	★	★	★	☆	☆	☆	☆
	101.6	★	★	★	★	★	★	☆	☆
	127	★	★	★	★	☆	☆	☆	☆
	152.4	★	★	★	★	☆	★	☆	☆
	203.2	★	★	★	★	☆	★	☆	☆
	254	★	★	★	★	☆	☆	☆	☆
	304.8	★	★	★	★	☆	☆	☆	☆
	356	★	★	★	☆	☆	☆	☆	☆
	406.4	★	★	★	★	☆	☆	☆	☆
	457.2	★	★	★	★	☆	☆	☆	☆
508	★	☆	☆	☆	☆	☆	☆	☆	
609.6	☆	★	★	☆	☆	☆	☆	☆	
316L	12.7			★	★	☆	☆	☆	☆
	19.05			★	★	☆	☆	☆	☆
	25.4			★	★	☆	☆	★	★
	31.8			★	★	☆	☆	☆	★
	38.1	★	★	★	★	☆	☆	☆	★
	50.8	★	★	★	★	★	☆	★	★
	63.5	★	★	★	★	☆	☆	☆	☆
	76.2	★	★	★	★	☆	☆	★	☆
	101.6	★	★	★	★	★	★	★	☆
	127	★	★	★	★	☆	☆	☆	☆
	152.4	★	★	★	★	☆	☆	☆	☆
	203.2	★	★	★	★	☆	☆	☆	☆
	254	★	★	★	★	☆	☆	☆	☆
	304.8	★	★	★	★	☆	☆	☆	☆
	356	★	★	★	★	☆	☆	☆	☆
	406.4	★	★	★	★	☆	☆	☆	☆
	457.2	★	★	★	★	☆	☆	☆	☆
508	★	★	★	★	☆	☆	☆	☆	
609.6	★	★	★	★	☆	☆	☆	☆	

TECHNICAL DATA

PLATE FLANGE DIMENSIONS

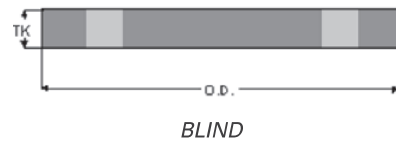
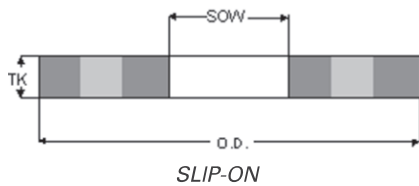


TABLE D

SIZE	SLIP ON BORE	OUTER DIA.	THICKNESS	BOLT CIRCLE DIA.	# OF HOLES	DIA. OF HOLES
mm	SOW	OD	TK	PCD		
12.7	13.7	95	5	67	4	14
19.05	20.1	100	5	73	4	14
25.4	26.4	115	5	83	4	14
31.8	32.8	120	6	87	4	14
38.1	39.3	135	6	98	4	14
50.8	52	150	8	114	4	18
63.5	64.5	165	8	127	4	18
76.2	77.5	185	10	146	4	18
88.9	90.4	205	10	165	4	18
101.6	103	215	10	178	4	18
127	128.5	255	13	210	8	18
152.4	154	280	13	235	8	18
203.2	204.5	335	13	292	8	18
254	256	405	16	356	8	22
304.8	306.5	455	19	406	12	22
355.6	358	525	22	470	12	26
381	384	550	22	495	12	26
406.4	409	580	22	521	12	26
457.2	460	640	25	584	12	26
508	510.5	705	29	641	16	26
558.8	561	760	29	699	16	30
609.6	612	825	32	756	16	30
711.2	714	910	38	845	20	30
762	764.5	995	38	927	20	33
812.8	815.5	1060	38	984	20	36
863.6	866	1090	50	1016	20	36
914.4	917.5	1175	50	1092	24	36

TABLE E

SIZE	SLIP ON BORE	OUTER DIA.	THICKNESS	BOLT CIRCLE DIA.	# OF HOLES	DIA. OF HOLES
mm	SOW	OD	TK	PCD		
12.7	13.7	95	6	67	4	14
19.05	20.1	100	6	73	4	14
25.4	26.4	115	7	83	4	14
31.8	32.8	120	8	87	4	14
38.1	39.3	135	9	98	4	14
50.8	52	150	10	114	4	18
63.5	64.5	165	10	127	4	18
76.2	77.5	185	11	146	4	18
88.9	90.4	205	13	165	8	18
101.6	103	215	13	178	8	18
127	128.5	255	14	210	8	18
152.4	154	280	17	235	8	22
203.2	204.5	335	19	292	8	22
254	256	405	22	356	12	22
304.8	306.5	455	25	406	12	26
355.6	358	525	29	470	12	26
381	384	550	32	495	12	26
406.4	409	580	32	521	12	26
457.2	460	640	35	584	16	26
508	510.5	705	38	641	16	26
558.8	561	760	44	699	16	30
609.6	612	825	48	756	16	33
711.2	714	910	54	845	20	33
762	764.5	995	54	927	20	36
812.8	815.5	1060	54	984	20	36
863.6	866	1090	57	1016	20	36
914.4	917.5	1175	64	1092	24	36

SEAMLESS TUBE

SPECIFICATIONS:	ASTM A269 ASTM A213 (ON REQUEST)
LENGTHS:	FIXED 6 METRES
FINISH:	ANNEALED & PICKLED BRIGHT ANNEALED

SIZE mm		TP304	TP316
OD	WT		
3.18	0.7	☆	★
4.76	0.7	☆	★
6.35	0.9	☆	★
6.35	1.2	☆	★
6.35	1.6	☆	★
7.94	0.9	☆	★
7.94	1.2	☆	★
7.94	1.6	☆	★
9.53	0.9	☆	★
9.53	1.2	☆	★
9.53	1.6	☆	★
12.7	0.9	☆	★
12.7	1.2	☆	★
12.7	1.6	☆	★
15.88	1.2	☆	★
15.88	1.6	☆	★
19.05	1.2	☆	★
19.05	1.6	☆	★
19.05	2.0	☆	★
25.4	1.2	☆	★
25.4	1.6	☆	★
25.4	2	☆	★
31.8	1.6	☆	★
31.8	2	☆	☆
38.1	1.6	☆	★
38.1	2	☆	★
38.1	3	☆	★
50.8	1.6	☆	★
50.8	2	☆	★
50.8	3	☆	★
6.00	1.0		★
8.00	1.0		★
10.00	1.0		★
12.00	1.0		★

SEAMLESS/WELDED TUBE

TECHNICAL DATA

APPROXIMATE MASS & THEORETICAL BURSTING PRESSURE FOR SEAMLESS & WELDED TUBE (WELDED REFER NOTES)

WT	mm SWG	0.45	0.51	0.61	0.71	0.91	1.22	1.63	2.03	2.64	3.25
		26	25	23	22	20	18	16	14	12	10
OD mm	Inch										
3.18	1/8	0.030 <i>145.8</i>	0.034 <i>165.2</i>	0.039 <i>197.6</i>	0.043 <i>230.0</i>	0.051 <i>294.7</i>					
4.76	3/16	0.048 <i>97.4</i>	0.053 <i>440.4</i>	0.062 <i>132.0</i>	0.071 <i>153.6</i>	0.086 <i>196.9</i>					
6.35	1/4	0.065 <i>73.0</i>	0.073 <i>82.7</i>	0.086 <i>98.9</i>	0.099 <i>115.2</i>	0.122 <i>146.6</i>	197.9	264.4			
7.94	5/16	0.083 <i>58.4</i>	0.093 <i>66.2</i>	0.110 <i>79.1</i>	0.127 <i>92.1</i>	0.158 <i>118.0</i>	0.202 <i>158.3</i>	0.254 <i>211.4</i>			
9.53	3/8	0.101 <i>48.6</i>	0.113 <i>55.1</i>	0.134 <i>65.9</i>	0.154 <i>76.7</i>	0.193 <i>98.4</i>	0.250 <i>131.9</i>	0.358 <i>176.2</i>			
12.70	1/2	0.136 <i>36.5</i>	0.153 <i>41.4</i>	0.182 <i>49.5</i>	0.210 <i>57.6</i>	0.265 <i>73.8</i>	0.345 <i>98.9</i>	0.445 <i>132.2</i>	0.534 <i>164.6</i>		
15.88	5/8		0.193 <i>33.1</i>	0.230 <i>39.6</i>	0.266 <i>46.1</i>	0.336 <i>59.0</i>	0.441 <i>79.1</i>	0.573 <i>105.7</i>	0.693 <i>131.7</i>		
19.05	3/4		0.233 <i>27.6</i>	0.277 <i>33.0</i>	0.321 <i>38.4</i>	0.407 <i>49.2</i>	0.536 <i>66.0</i>	0.700 <i>88.1</i>	0.852 <i>109.8</i>	1.068 <i>142.7</i>	1.266 <i>175.7</i>
22.23	7/8		0.273 <i>23.6</i>	0.325 <i>28.3</i>	0.377 <i>32.9</i>	0.478 <i>42.2</i>	0.632 <i>56.5</i>	0.828 <i>75.5</i>	1.011 <i>94.1</i>	1.275 <i>122.3</i>	1.521 <i>150.6</i>
25.40	1		0.313 <i>20.7</i>	0.373 <i>24.7</i>	0.432 <i>28.8</i>	0.550 <i>36.9</i>	0.727 <i>49.5</i>	0.955 <i>66.1</i>	1.170 <i>82.3</i>	1.482 <i>107.1</i>	1.775 <i>131.8</i>
28.58	1 1/8				0.488 <i>25.6</i>	0.621 <i>32.8</i>	0.823 <i>44.0</i>	1.083 <i>58.7</i>	1.329 <i>73.2</i>	1.689 <i>95.1</i>	2.030 <i>117.1</i>
31.75	1 1/4				0.543 <i>23.0</i>	0.692 <i>29.5</i>	0.919 <i>36.6</i>	1.211 <i>52.9</i>	1.488 <i>65.9</i>	1.895 <i>85.6</i>	2.284 <i>105.4</i>
38.10	1 1/2					0.835 <i>24.6</i>	1.110 <i>33.0</i>	1.466 <i>44.1</i>	1.806 <i>54.9</i>	2.309 <i>71.4</i>	2.793 <i>87.9</i>
44.45	1 3/4					0.977 <i>21.1</i>	1.301 <i>28.3</i>	1.721 <i>37.8</i>	2.124 <i>47.0</i>	2.722 <i>61.2</i>	3.302 <i>75.3</i>
50.80	2						1.120 <i>18.5</i>	1.492 <i>24.7</i>	1.976 <i>33.0</i>	2.441 <i>41.2</i>	3.135 <i>53.5</i>
63.50	2 1/2							1.874 <i>19.8</i>	2.487 <i>26.4</i>	3.077 <i>32.9</i>	3.962 <i>42.8</i>
76.20	3							2.256 <i>16.5</i>	2.997 <i>22.0</i>	3.713 <i>27.5</i>	4.789 <i>35.7</i>
88.90	3 1/2								3.508 <i>18.9</i>	4.349 <i>23.5</i>	5.616 <i>30.6</i>
101.60	4								4.018 <i>16.5</i>	4.984 <i>20.6</i>	6.443 <i>26.8</i>
127.00	5								5.039 <i>13.2</i>	6.256 <i>16.5</i>	8.096 <i>21.4</i>
152.40	6								6.060 <i>11.0</i>	7.527 <i>13.7</i>	9.750 <i>17.8</i>
203.20	8								8.102 <i>8.3</i>	10.071 <i>10.3</i>	13.057 <i>13.4</i>

1 Figures shown in bold are the Theoretical Weight of the tube, calculated using the nominal outside diameter and wall thickness as in the formula: $w = C(d-t)t$. Where W = Weight (kg/m), C = 0.02466 d = Specified OD (millimetres) t = Specified WT (millimetres)

2 Figures shown in italics are the Theoretical Bursting Pressure of Grade 316, 304 and 321 seamless tube, calculated using Barlow's thin wall formula and where S = 515 MPa: $P = \frac{2st}{D}$

Where: P = Theoretical Bursting Pressure (MPa) S = Tensile Strength (MPa) t = Wall thickness (millimetres) D = Outside diameter (millimetres)

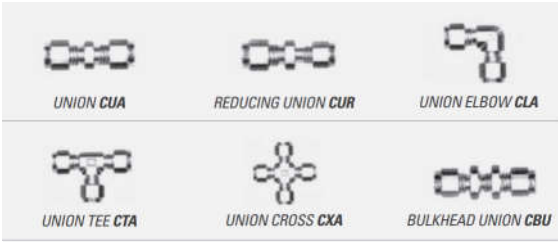
For Theoretical Bursting Pressure of Grades 316, 304 and 321 welded tube, multiply the figures shown in the table by 0.85 (Weld Joint Efficiency).

For Theoretical Bursting Pressure of Grades 316L and 304L seamless tube S = 485 MPa, multiply the figure shown in the table by 0.9417.

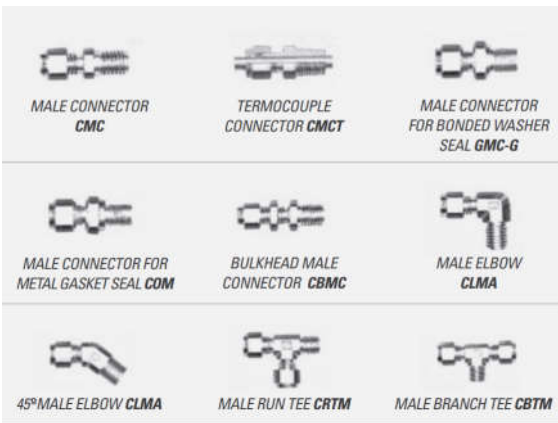
For Theoretical Bursting Pressure of Grades 316L and 304L welded tube, multiply the figures shown in the table by 0.8005 (S = 485 MPa x 0.85 Weld Joint Efficiency).

This Table is a guide only and should not be used to determine availability of products. Call your supplier or ASSDA to determine availability.

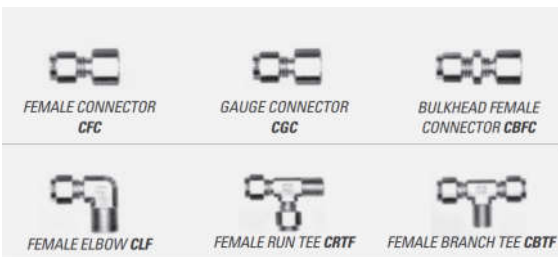
TUBE TO TUBE UNION



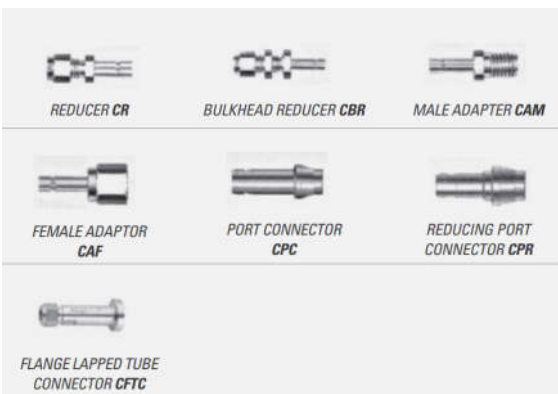
TUBE TO MALE PIPE



TUBE TO FEMALE PIPE



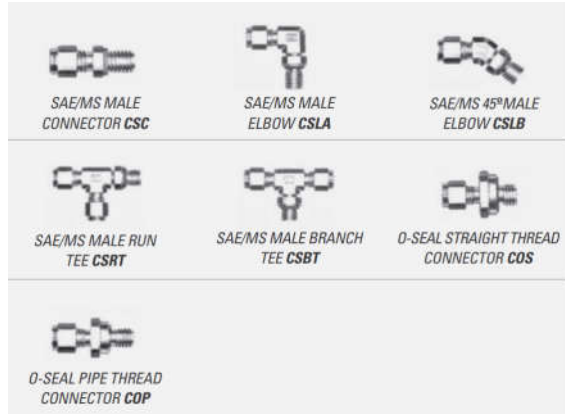
STUB TUBE CONNECTOR



TUBE TO AN TUBE



TUBE TO SAE/MS O-RING



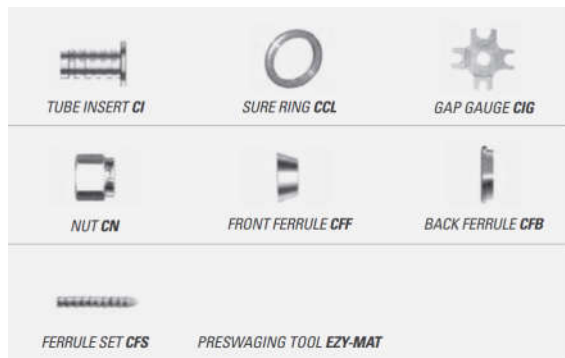
TUBE TO WELD END



PLUG & CAP



TUBE TO TUBE UNION



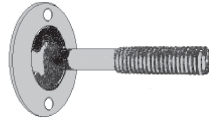
AUXILIARY TUBE FITTINGS

ADJUSTABLE FEET & INSERTS

(M16 THREAD)

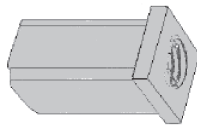
STAINLESS STEEL ADJUSTABLE FOOT

BASE SIZE	304
32mm	★
50mm	★
65mm	★



SQUARE TUBE NYLON INSERTS

BASE SIZE	304
25mm	★
32mm	★
38mm	★



STAINLESS STEEL TUBE SADDLES

SIZE	304
1/4"	★
3/8"	★
1/2"	★
3/4"	★
1"	★
1 1/4"	★
1 1/2"	★
2"	★



STAINLESS STEEL CONCEALED FLANGES

TUBE SIZE	304	316
1/2"	★	★
3/4"	★	★
1"	★	★
1 1/4"	★	★
1 1/2"	★	★
2"	★	★
2 1/2"	☆	★
3"	☆	★
4"	☆	★



SIDE VIEW



TOP VIEW

T316 SOLID PUSH-IN CAPS

TO SUIT O.D	316
25.4mm	★
31.8mm	★
38.1mm	★
50.8mm	★
63.5mm	★
76.2mm	★



FACE RINGS

SPECIFICATIONS: FLAT FACE RINGS

MANUFACTURE: FLAT FACE MANUFACTURED FROM SHEET



FLAT FACE RINGS

INSIDE DIAMETER	MATERIAL	GRADE 316
mm		
38.1	3mm Thick	☆
50.8	3 mm Thick	★
63.5	3 mm Thick	★
76.2	3mm Thick	☆

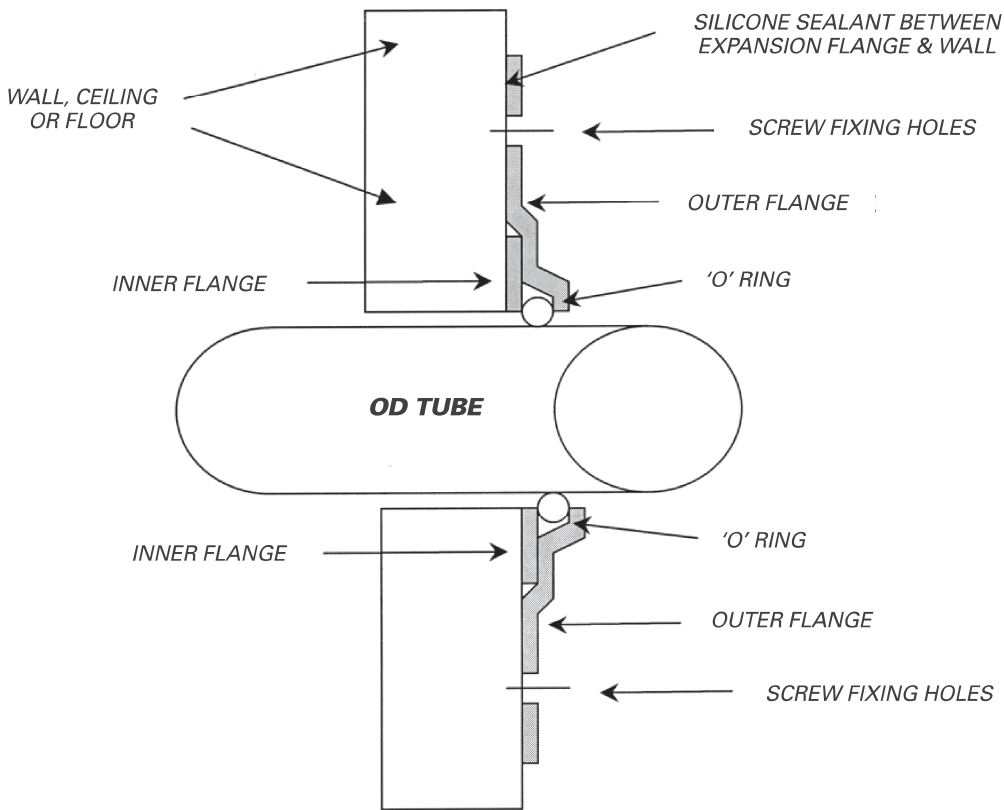
SPECIFICATIONS: ANGLE NECK FACE RINGS

MANUFACTURE: ANGLE NECK MANUFACTURED FROM ANGLE



ANGLE NECK RINGS

INSIDE DIAMETER	MATERIAL	GRADE 316
mm		
38.1	PRESSED	★
50.8	PRESSED	★
63.5	PRESSED	★
76.2	20 x 20 x 3	★
101.6	20 x 20 x 3	★
127	25 x 25 x 3	★
152.4	25 x 25 x 3	★
203	25 x 25 x 3	★
254	30 x 30 x 4	★
305	30 x 30 x 4	★
356	40 x 40 x 5	☆
406	40 x 40 x 5	★
457	40 x 40 x 5	★
508	40 x 40 x 5	★



SIZE	304
3/4"	★
1"	★
1 1/4"	★
1 1/2"	★
2"	★
2 1/2"	★
3"	★
4"	★
6"	★

- Provides a hygienic seal for wall, floor and ceiling penetrations of process piping in food and beverage plants
- Allows lineal expansion and contraction of pipework without permitting the entry of water, dust, vapours or insects
- Can be adapted for steam pipes or non-standard tube sizes
- Suitable for cip hosedowns
- Eliminate potential health hazards
- Minimises damage during refurbishment
- Professional finish

HD A-JUSTA-FOOT™

There are two types of HEAVY DUTY A-JUSTA-FOOT™. In both types the whole unit is made in STAINLESS STEEL. The HD range is ball jointed and has 50 degree angle adjustment.

The HDA range has a swivelling stud which is totally captive in the base, it has 10 degree angle adjustment and is ideal where there is a requirement to resist and upward force.

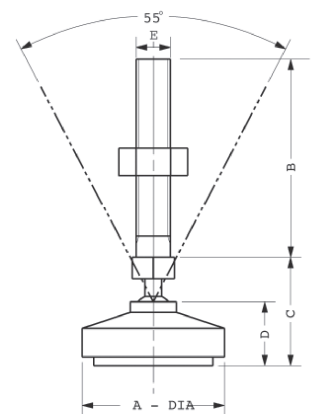
Both the HD and HDA ranges have anti-slip pads, and are available with BOLTDOWN holes in the base.

They can both be adjusted in position under the machine and have high load ratings.

To compliment the feet there is a range of Threaded Tube Ends, in round and square, which are designed to be welded into the tube.

HD = HEAVY DUTY A-JUSTA-FOOT™ 121 SERIES (STAINLESS STEEL) COMPLETE WITH ANTI SLIP PADS

MIDWAY CODES	PART NO.	SIZE	A	B	C	D	E	RATING
	121/40/M8/60	40xM8	40	60	30	18	M8	500kg
	121/40/M10/60	40xM10	40	60	30	18	M10	700kg
TFAJFHD1260090	121/60/M12/90	60xM12	60	90	40	17	M12	1200kg
	121/60/M12/190	60xM12x190	60	190	40	17	M12	1200kg
TFAJFHD1660090	121/60/M16/90	60xM16	60	90	40	17	M16	2000kg
TFAJFHD1660190	121/60/M16/190	60xM16x190	60	190	40	17	M16	2000kg
	121/60/M20/90	60xM20	60	90	40	17	M20	3500kg
	121/60/M20/190	60xM20x190	60	190	40	17	M20	3500kg
	121/60/M24/90	60xM24	60	90	40	17	M24	4500kg
	121/60/M24/190	60xM24x190	60	190	40	17	M24	4500kg
	121/90/M12/90	90xM12	90	90	48	19	M12	1200kg
	121/90/M12/190	90xM12x190	90	190	48	19	M12	1200kg
TFAJFHD1690090	121/90/M16/90	90xM16	90	90	48	19	M16	2000kg
TFAJFHD1690190	121/90/M16/190	90xM16x190	90	190	48	19	M16	2000kg
	121/90/M20/90	90xM20	90	90	48	19	M20	3500kg
	121/90/M20/190	90xM20x190	90	190	48	19	M20	3500kg
	121/90/M24/90	90xM24	90	90	48	19	M24	4500kg
	121/90/M24/190	90xM24x190	90	190	48	19	M24	4500kg
	121/125/M12/90	125xM12	125	90	45	22	M12	1200kg
	121/125/M16/90	125xM16	125	90	45	22	M16	2000kg
	121/125/M16/190	125xM16x190	125	190	45	22	M16	2000kg
TFAJFHD20125090	121/125/M20/90	125xM20	125	90	45	22	M20	3500kg
TFAJFHD20125190	121/125/M20/190	125xM20x190	125	190	45	22	M20	3500kg
	121/125/M24/90	125xM24	125	90	45	22	M24	4500kg
TFAJFHD24125190	121/125/M24/190	125xM24x90	125	190	45	22	M24	4500kg



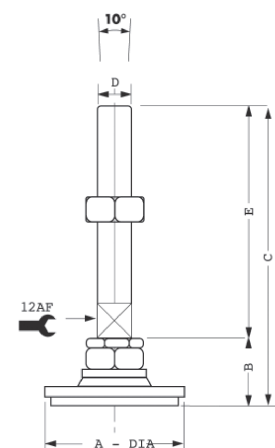
HDA STANDARD 221 SERIES

	A	B	C	D	E	F	G
	BASE	BASE HEIGHT	OVERALL HEIGHT	STUD	THREAD LENGTH	PIVOT ANGLE	RATING
HDA221/90/M16/70	90	45	115	M16	70	10 deg	2000kg
HDA221/90/M16/170	90	45	215	M16	170	10 deg	2000kg
HDA221/90/M20/70	90	45	115	M20	70	10 deg	3000kg
HDA221/90/M20/170	90	45	215	M20	170	10 deg	3000kg
HDA221/90/M24/70	90	45	115	M24	70	10 deg	4000kg
HDA221/90/M24/170	90	45	215	M24	170	10 deg	4000kg

The A-JUSTA-FOOT™ is a multi-adjustable pedestal foot, ideal for industrial, commercial, workshop or food industry applications.

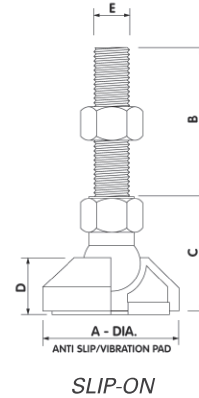
The special insert in the base helps to absorb vibration and means your machinery will stay exactly where you put it.

A-JUSTA-FOOT™ is available in a large variety of sizes. Special requirements can often be produced.



BALL JOINTED A-JUSTA-FOOT™ (STAINLESS STEEL) 21 SERIES

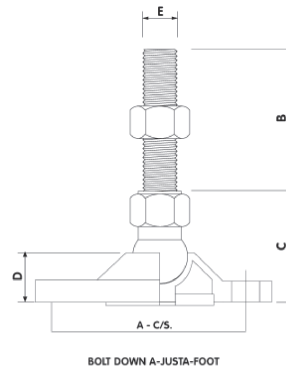
MIDWAY CODES	PART NO.	SIZE	A	B	C	D	E	RATING
TFAJFBJ0840080	21/40/M8/80	40xM8	40	80	33	20	M8	350kg
TFAJFBJ1040060	21/40/M10/60	40xM10	40	60	33	20	M10	500kg
TFAJFBJ1260065	21/60/M12/65	60xM12	60	65	51	25	M12	800kg
TFAJFBJ1660065	21/60/M16/65	60xM16	60	65	51	25	M16	1000kg
TFAJFBJ1290065	21/90/M12/65	90xM12	90	65	51	25	M12	800kg
TFAJFBJ1690065	21/90/M16/65	90xM16	90	65	51	25	M16	1000kg
TFAJFBJ1660165	21/60/M16/165	60xM16	60	165	51	25	M16	1000kg
TFAJFBJ1690165	21/90/M16/165	90xM16	90	165	51	25	M16	1000kg
	21/60/M20/165	60xM20	60	100	51	25	M20	1000kg
	21/60/M20/165	60xM20	60	165	51	25	M20	1000kg
	21/90/M20/100	90xM20	90	100	51	25	M20	1000kg
TFAJFBJ2090165	21/90/M20/165	90xM20	90	165	51	25	M20	1000kg



A-JUSTA-FOOT™ is available in other stud lengths (B) as required

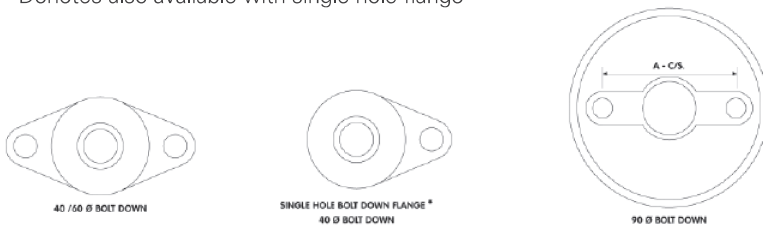
BOLT DOWN A-JUSTA-FOOT™ (STAINLESS STEEL) 31 SERIES

MIDWAY CODES	PART NO.	SIZE	A	B	C	D	E	RATING
TFAJFBD0840080	31/40/M8/80*	40xM8	60	80	33	20	M8	350kg
TFAJFBD1040060	31/40/M10/60*	40xM10	60	60	33	20	M10	500kg
TFAJFBD1260065	31/60/M12/65	60xM12	80	65	51	23	M12	800kg
TFAJFBD1660065	31/60/M16/65	60xM16	80	65	51	23	M16	1000kg
TFAJFBD1660165	31/60/M16/165	60xM16	80	165	51	23	M16	1000kg
	31/60/M20/100	60xM20	80	100	51	23	M20	1000kg
TFAJFBD2060165	31/60/M20/165	60xM20	80	165	51	23	M20	1000kg
TFAJFBD1290065	31/90/M12/65	90xM12	60	65	51	25	M12	800kg
TFAJFBD1690065	31/90/M16/65	90xM16	60	65	51	25	M16	1000kg
TFAJFBD1690165	31/90/M16/165	90xM16	60	165	51	25	M16	1000kg
	31/90/M20/100	90xM20	60	100	51	25	M20	1000kg
TFAJFBD2090165	31/90/M20/165	90xM20	60	165	51	25	M20	1000kg



A-JUSTA-FOOT™ is available in other stud lengths (B) as required

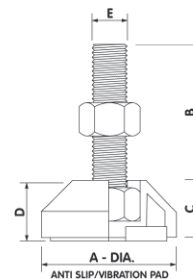
* Denotes also available with single hole flange

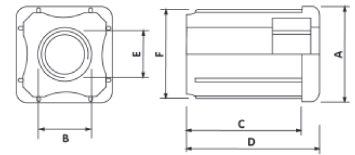


31 SERIES

FIXED A-JUSTA-FOOT™ (STAINLESS STEEL) 41 SERIES

MIDWAY CODES	PART NO.	SIZE	A	B	D	E	RATING
TFAJFFX084035	41/40/M8/35	40xM8	40	35	20	M8	350kg
TFAJFFX104035	41/40/M10/35	40xM10	40	35	20	M10	500kg
	41/60/M12/60	60xM12	60	60	25	M12	800kg

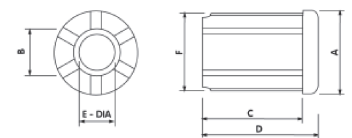




SQUARE THREADED TUBE END
+ SQUARE PLUG

SQUARE THREADED TUBE END (STAINLESS STEEL)
11 SERIES (G) IS RECOMMENDED ID TUBE SIZE

MIDWAY CODES	PART NO.	SIZE	A	B	C	D	E	F	G	RATING
TFAJFSTI0819	11/9/M8	19xM8	19	M8	22.5	24.8	9	16	15-16	50kg
TFAJFSTI0825	11/25/M8	25xM8	25	M8	39	44	10	23.5	22-23	250kg
TFAJFSTI1025	11/25/M10	25xM10	25	M10	39	44	11	23.5	22-23	250kg
TFAJFSTI1225	11/25/M12	25xM12	25	M12	39	44	13	23.5	22-23	250kg
TFAJFSTI1625	11/25/M16	25xM16	25	M16	39	44	16.5	23.5	22-23	250kg
	11/30/M8	30xM8	30	M8	39	45	10	26.8	26-27	350kg
	11/30/M10	30xM10	30	M10	39	45	11	26.8	26-27	350kg
	11/30/M12	30xM12	30	M12	39	45	13	26.8	26-27	350kg
	11/30/M16	30xM16	30	M16	39	45	16.5	26.8	26-27	350kg
TFAJFSTI0832	11/32/M8	32xM8	32	M8	39	45	10	30	28-29	350kg
TFAJFSTI1032	11/32/M10	32xM10	32	M10	39	45	11	30	28-29	350kg
TFAJFSTI1232	11/32/M12	32xM12	32	M12	39	45	13	30	28-29	350kg
TFAJFSTI1632	11/32/M16	32xM16	32	M16	39	45	16.5	30	28-29	350kg
	11/35/M8	35xM8	35	M8	39	45	11	32.2	31-32	350kg
	11/35/M10	35xM10	35	M10	39	45	11	32.2	31-32	400kg
	11/35/M12	35xM12	35	M12	39	45	13	32.2	31-32	400kg
TFAJFSTI1635	11/35/M16	35xM16	35	M16	39	45	16.5	32.2	31-32	400kg
TFAJFSTI0838	11/38/M8	38xM8	38	M8	41	45	10	36	35-36	500kg
TFAJFSTI1038	11/38/M10	38xM10	38	M10	41	47	17.7	36	35-36	500kg
TFAJFSTI1238	11/38/M12	38xM12	38	M12	41	47	13	36	35-36	500kg
TFAJFSTI1638	11/38/M16	38xM16	38	M16	41	47	18	36	35-36	500kg
	11/40/M10	40xM10	40	M10	39	45	11	36.8	36-37	500kg
	11/40/M12	40xM12	40	M12	39	45	13	36.8	36-37	500kg
	11/40/M16	40xM16	40	M16	39	45	16.5	36.8	36-37	500kg
TFAJFSTI1050	11/51/M10	51xM10	51	M10	39	45	11	48	47-48	750kg
TFAJFSTI1250	11/51/M12	51xM12	51	M12	39	45	13	48	47-48	750kg
TFAJFSTI1650	11/51/M16	51xM16	51	M16	39	45	18	48	47-48	750kg
	11/51/M20	51xM20	51	M20	39	45	18	48	47-48	750kg



ROUND THREADED TUBE END

ROUND THREADED TUBE END (STAINLESS STEEL)
81 SERIES

MIDWAY CODES	PART NO.	SIZE	A	B	C	D	E	F	G	RATING
	81/25/M8	25xM8	25	M8	38	46.5	11	23	22	100kg
	81/25/M10	25xM10	25	M10	38	46.5	12	23	22	100kg
	81/25/M12	25xM12	25	M12	38	46.5	14	23	22	100kg
TFAJFRTI1032	81/32/M10	32xM10	32	M10	39	45	12	29.5	28-29	250kg
	81/32/M12	32xM12	32	M12	39	45	14	29.5	28-29	250kg
	81/32/M16	32xM16	32	M16	39	45	18	29.5	28-29	250kg
TFAJFRTI1038	81/38/M10	38xM10	38	M10	38	45	12	35.5	35-36	300kg
TFAJFRTI1238	81/38/M12	38xM12	38	M12	38	45	14	35.5	35-36	300kg
TFAJFRTI1638	81/38/M16	38xM16	38	M16	38	45	18	35.5	35-36	300kg
	81/40/M8	40xM8	40	M8	39	45	11	36.8	36-37	350kg
	81/40/M10	40xM10	40	M10	39	45	12	36.8	36-37	500kg
	81/40/M12	40xM12	40	M12	39	45	14	36.8	36-37	500kg
	81/40/M16	40xM16	40	M16	39	45	18	36.8	36-37	500kg
TFAJFRTI1250	81/51/M12	51xM12	51	M12	38	45	14	48	47-48	450kg
TFAJFRTI1650	81/51/M16	51xM16	51	M16	38	45	18	48	47-48	450kg
TFAJFRTI1665	81/62/M16	62xM16	62	M16	38	45	18	60.5	60-61	450kg



**AUSTRALIA'S LARGEST
INDEPENDENT
STAINLESS STOCKISTS**

HEAD OFFICE & COIL CENTRE

Street: 56 Business Street YATALA QLD 4207
Postal: PO Box 621 BEENLEIGH QLD 4207 AUSTRALIA

P (07) 3382 9500 | **F** (07) 3807 8150
E headoffice@midwaymetals.com.au

ALBURY

Prospero Court ALBURY NSW 2640
P (02) 6041 4000 | **F** (02) 6041 4422
E albury@midwaymetals.com.au

BRISBANE

56 Business Street YATALA QLD 4207
P (07) 3287 2811 | **F** (07) 3807 2687
E brisbane@midwaymetals.com.au

MELBOURNE

33 Tatterson Road DANDENONG VIC 3175
P (03) 9791 5111 | **F** (03) 9791 5333
E melbourne@midwaymetals.com.au

NEWCASTLE

12 Sandringham Avenue THORNTON NSW 2322
P (02) 4966 3800 | **F** (02) 4966 3811
E newcastle@midwaymetals.com.au

PERTH

471 Victoria Road MALAGA WA 6090
P (08) 9248 6944 | **F** (08) 9248 6955
E perth@midwaymetals.com.au

SYDNEY

24-28 Lockwood Road, ERSKINE PARK NSW 2759
P (02) 9670 8900 | **F** (02) 9834 2441
E sydney@midwaymetals.com.au

TOWNSVILLE

331-335 Woolcock Street GARBUTT QLD 4814
P (07) 4728 8777 | **F** (07) 4728 8778
E townsville@midwaymetals.com.au

AUCKLAND

P +64 9 424 4194 | **F** +64 9 424 4194
E auckland@midwaymetals.com.au

VIETNAM

P +84 3 5184 8468 | **F** +84 3 5184 8456
E info@midwaymetals.com.vn

www.midwaymetals.com.au

ABN: 88 001 831 090

DISCLAIMER

The technical information contained in this publication should not be relied on for specific applications without first securing competent advice. Whilst all care is taken to ensure that the information contained herein is accurate and up-to-date, Midway Metals Pty Ltd does not warrant its accuracy or completeness and does not accept liability for errors or omissions.

COPYRIGHT

All rights reserved. No part of this publication may be reproduced or distributed in any form or by any means, or stored in a database or retrieval system, without prior written permission of Midway Metals.