



**Midway Metals**

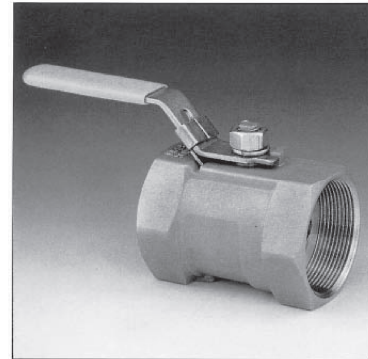
the stainless steel innovators

***PRODUCTS & SERVICES  
CATALOGUE***

*13<sup>TH</sup> EDITION*

# 1 PIECE 1000 WOG BALL VALVE - THREADED

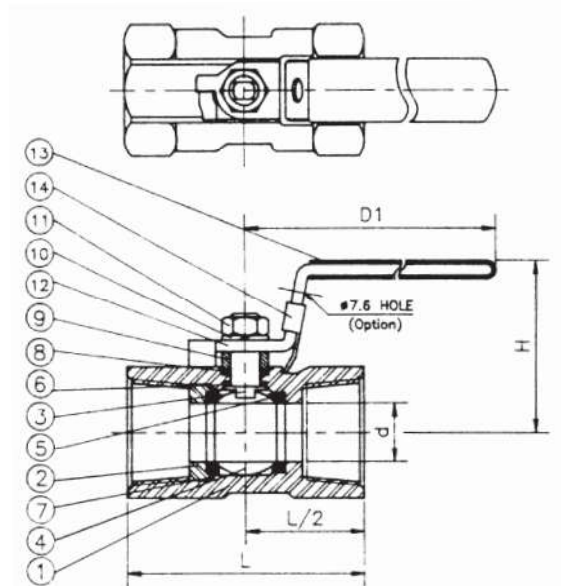
<b>SPECIFICATIONS:</b>	INVESTMENT CAST BODY & END CAP
<b>END TYPE:</b>	THREADED BSP OR NPT BOTTOM-LOADED, BLOW-OUT-PROOF STEM, ADJUSTABLE STEM PACKING STAINLESS STEEL HANDLE WITH VINYL GRIP
<b>OPTION:</b>	LOCKING DEVICE
<b>APPLICATIONS:</b>	FOR GENERAL CHEMICAL & INDUSTRIAL SERVICES
<b>PRESSURE RATING:</b>	1000 PSI WOG (NON-SHOCK)
<b>STEAM RATING:</b>	150 PSI WSP
<b>TEMPERATURE RANGE:</b>	-29°C + 200°C



## MATERIALS LIST

NO.	PART NAME	SPECIFICATION
1	BODY	ASTM A351 GR.CF8M
2	CAP	ASTM A351 GR.CF8M
3	STEM	STAINLESS STEEL 316
4	BALL	ASTM A351 GR.CF8M
5	BALL SEAT	PTFE
6	THRUST WASHER	PTFE
7	CAP SEAT	PTFE
8	PACKING	PTFE
9	GLAND	STAINLESS STEEL 304
10	WASHER	STAINLESS STEEL 304
11	HANDLE NUT	STAINLESS STEEL 304
12	HANDLE	STAINLESS STEEL 304
13	HANDLE SLEEVE	VINYL GRIP
14*	LOCKING PLATE	STAINLESS STEEL 304

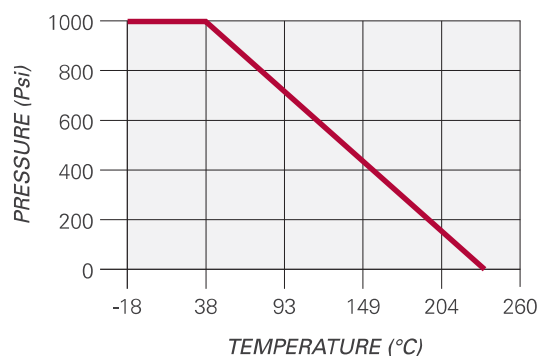
(\*) Option



## DIMENSIONS (mm)

SIZE	d	L	H	D1	Cv FACTOR
<b>Inch</b>					
1/4	5	39	31	60	1
3/8	7	44.5	35	70	2.0
1/2	9.2	56.5	43	86	4
3/4	12.5	58.5	46	86	7
1	16	71.5	50	104	10
1 1/4	20	78.5	54	104	17
1 1/2	24.5	83.5	65	126	26
2	32	100	72	140	45

## PRESSURE TEMPERATURE RATINGS



# 2 PIECE FULL PORT 1000 WOG BALL VALVE - THREADED

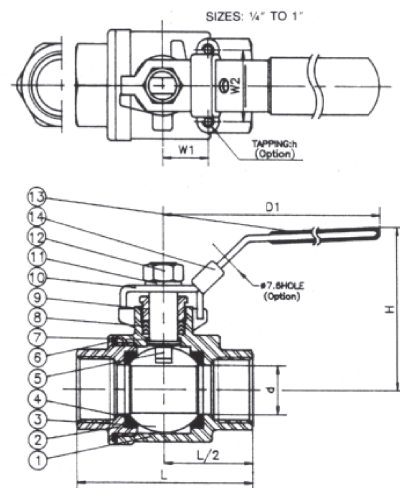
<b>SPECIFICATIONS:</b>	INVESTMENT CAST BODY & END CAP
<b>END TYPE:</b>	THREADED BSP OR NPT BOTTOM-LOADED, BLOW-OUT-PROOF STEM, ADJUSTABLE STEM PACKING EASY ACTUATOR MOUNTING STAINLESS STEEL HANDLE WITH VINYL GRIP
<b>OPTION:</b>	LOCKING DEVICE
<b>APPLICATIONS:</b>	FOR GENERAL CHEMICAL & INDUSTRIAL SERVICES
<b>PRESSURE RATING:</b>	1000 PSI WOG (NON-SHOCK)
<b>STEAM RATING:</b>	150 PSI WSP
<b>TEMPERATURE RANGE:</b>	-29°C + 200°C



## MATERIALS LIST

NO.	PART NAME	SPECIFICATION
1	BODY	ASTM A351 GR.CF8M
2	END CAP	ASTM A351 GR.CF8M
3	BALL	ASTM A351 GR.CF8M
4	BALL Seats	PTFE + 15% GF
5	STEM	S.S.316
6	END SEAL	PTFE
7	THRUST WASHER	PTFE
8	STEM PACKINGS	PTFE
9	GLAND	STAINLESS STEEL 304
10	HANDLE	STAINLESS STEEL 304
11	HANDLE WASHER	STAINLESS STEEL 304
12	HANDLE NUT	STAINLESS STEEL 304
13	HANDLE SLEEVE	VINYL GRIP
14*	LOCKING PLATE	STAINLESS STEEL 304

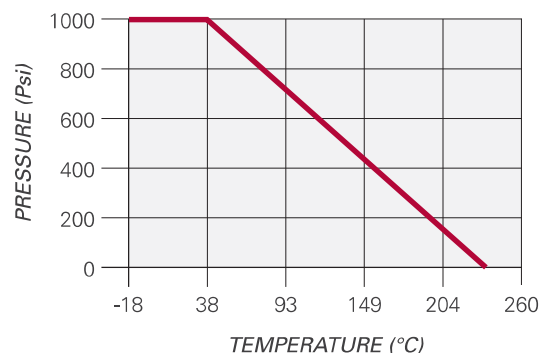
(\*) Option



## DIMENSIONS (mm)

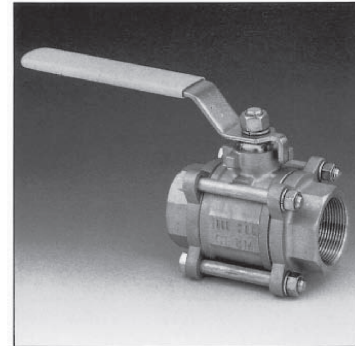
SIZE	d	L	H	D1	h	Cv FACTOR
<b>Inch</b>						
1/4	11.0	59.5	50	97	10-24 UNC	6
3/8	12.7	60.5	50	97	10-24 UNC	12
1/2	15	64	60	126	10-24 UNC	19
3/4	20	76	63	126	10-24 UNC	37
1	25	90.2	80	145	10-24 UNC	64
1 1/4	32	98.8	84	145	1/4-20 UNC	103
1 1/2	38	116	96	204	1/4-20 UNC	143
2	50.8	135.5	104	204	1/4-20 UNC	360
2 1/2	65	163	144	248	1/4-20 UNC	440
3	80	191	156	248	1/4-20 UNC	520

## PRESSURE TEMPERATURE RATINGS



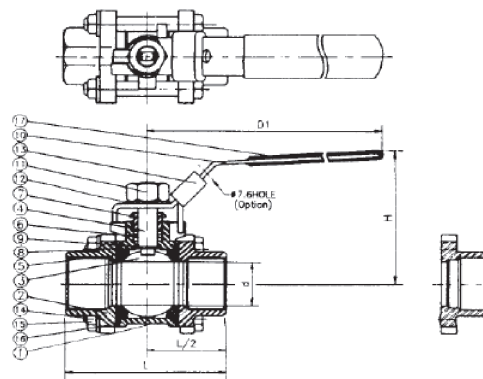
# 3 PIECE 1000 WOG BALL VALVE - THREADED

<b>SPECIFICATIONS:</b>	INVESTMENT CAST BODY & END CAP
<b>END TYPE:</b>	THREADED BSP OR NPT, BUTTWELD, SOCKET WELD 3PC DESIGN FOR FAST INSTALLATION & SIMPLE MAINTENANCE, BOTTOM-LOADED, BLOW-OUT-PROOF STEM, ADJUSTABLE STEM PACKING STAINLESS STEEL HANDLE WITH VINYL GRIP
<b>OPTION:</b>	LOCKING DEVICE
<b>APPLICATIONS:</b>	FOR GENERAL CHEMICAL & INDUSTRIAL SERVICES
<b>PRESSURE RATING:</b>	1000 PSI WOG (NON-SHOCK)
<b>STEAM RATING:</b>	150 PSI WSP
<b>TEMPERATURE RANGE:</b>	-29°C + 200°C



## MATERIALS LIST

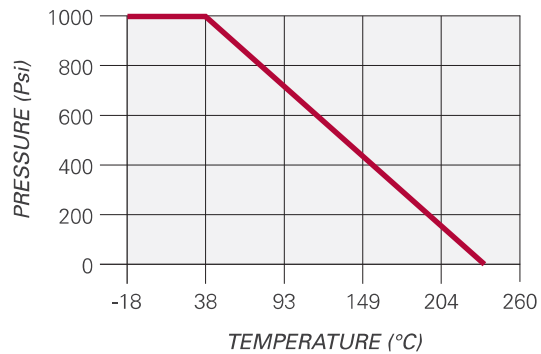
NO.	PART NAME	SPECIFICATION
1	BODY	ASTM A351 GR.CG8M
2	END CAPS	ASTM A351 GR.CG8M
3	BALL	ASTM A351 GR.CG8M
4	STEM	STAINLESS STEEL 316
5	BALL SEATS	PTFE
6	STEM PACKING	PTFE
7	GLAND	STAINLESS STEEL 304
8	END SEALS	PTFE
9	THRUST WASHER	PTFE
10	HANDLE	STAINLESS STEEL 304
11	HANDLE NUT	STAINLESS STEEL 304
12	HANDLE WASHER	STAINLESS STEEL 304
13	LOCKING PLATE	STAINLESS STEEL 304
14	BOLTS	STAINLESS STEEL 304
15	BOLT NUTS	STAINLESS STEEL 304
16	BOLT WASHERS	STAINLESS STEEL 304
17	HANDLE SLEEVE	VINYL GRIP



## DIMENSIONS (mm)

SIZE	d	L	H	D1	Cv FACTOR
<b>Inch</b>					
1/4	11.2	65	50	97	6
3/8	12.7	65	50	37	12
1/2	16	71	60	126	19
3/4	20	85	63	126	37
1	25	95	80	145	64
1 1/4	32	112	86	145	103
1 1/2	38.1	123	94	204	143
2	50.8	141	104	204	360
2 1/2	65	173	140	248	440
3	80	192	152	248	520
4	100	225	180	292	820

## PRESSURE TEMPERATURE RATINGS



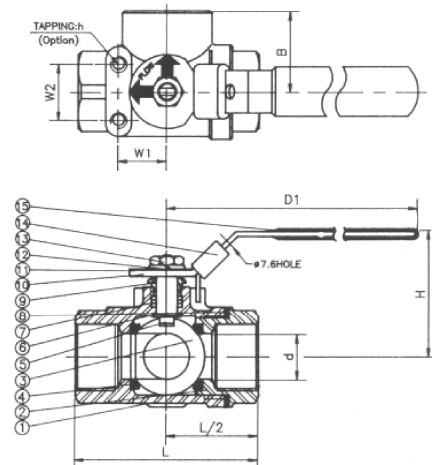
# 3 WAY REDUCED PORT 1000 WOG BALL VALVE - THREADED 'L' PORT

<b>SPECIFICATIONS:</b>	INVESTMENT CAST BODY & END CAP
<b>END TYPE:</b>	THREADED BSP OR NPT BOTTOM-LOADED, BLOW-OUT-PROOF STEM, ADJUSTABLE STEM PACKING, REINFORCED PTFE MINIMIZE SEAT DISTORTION, EASY ACTUATOR MOUNTING, STAINLESS STEEL HANDLE WITH VINYL GRIP
<b>OPTION:</b>	LOCKING DEVICE
<b>APPLICATIONS:</b>	FOR GENERAL CHEMICAL & INDUSTRIAL SERVICES
<b>PRESSURE RATING:</b>	1000 PSI WOG (NON-SHOCK)
<b>STEAM RATING:</b>	150 PSI WSP
<b>TEMPERATURE RANGE:</b>	-29°C + 200°C



## MATERIALS LIST

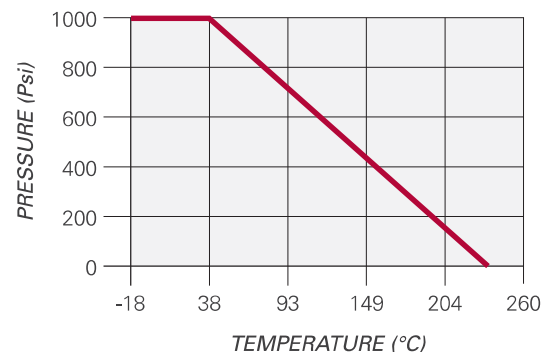
NO.	PART NAME	SPECIFICATION
1	BODY	ASTM A351 GR.CF8M
2	END CAP	ASTM A351 GR.CF8M
3	BALL	ASTM A351 GR.CF8M
4	BALL SEATS	REINFORCED PTFE
5	STEM	STAINLESS STEEL 316
6	THRUST WASHER	REINFORCED PTFE
7	STEM PACKINGS	REINFORCED PTFE
8	END SEAL	REINFORCED PTFE
9	GLAND	STAINLESS STEEL 304
10	HANDLE	STAINLESS STEEL 304
12	HANDLE WASHER	STAINLESS STEEL 304
13	HANDLE NUT	STAINLESS STEEL 304
14	LOCKING PLATE	STAINLESS STEEL 304
15	HANDLE SLEEVE	VINYL GRIP



## DIMENSIONS (mm)

SIZE	d	L	H	D1	B	h	Cv FACTOR
Inch							
3/8	10.0	64	53	97	32	10-24 UNC	6.0
1/2	12.7	64	53	97	32	10-24 UNC	6.0
3/4	16.0	76	63	126	38	10-24 UNC	12.0
1	20.0	87	66	126	43.5	10-24 UNC	14.0
1 1/4	25.0	96	81	145	48	10-24 UNC	24.0
1 1/2	32.0	114	83	145	57	1/4-20 UNC	30.0
2	38.1	142	96	204	71	1/4-20 UNC	50.0

## PRESSURE TEMPERATURE RATINGS



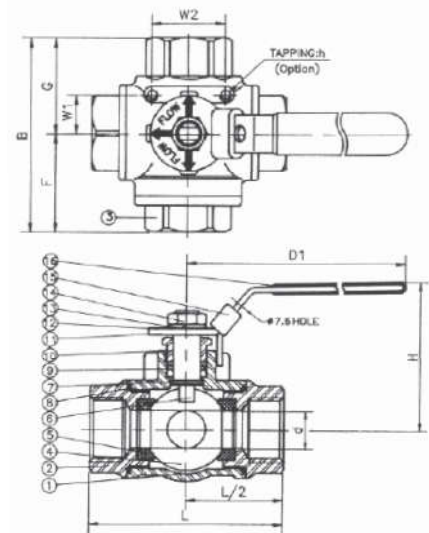
# 3 WAY REDUCED PORT 1000 WOG BALL VALVE - THREADED 'T' PORT

<b>SPECIFICATIONS:</b>	INVESTMENT CAST BODY & END CAP
<b>END TYPE:</b>	THREADED BSP OR NPT, BOTTOM-LOADED, BLOW-OUT-PROOF STEM, ADJUSTABLE STEM PACKING, REINFORCED PTFE MINIMIZE SEAT DISTORTION, EASY ACTUATOR MOUNTING, STAINLESS STEEL HANDLE WITH VINYL GRIP
<b>OPTION:</b>	LOCKING DEVICE
<b>APPLICATIONS:</b>	FOR GENERAL CHEMICAL & INDUSTRIAL SERVICES
<b>PRESSURE RATING:</b>	1000 PSI WOG (NON-SHOCK)
<b>STEAM RATING:</b>	150 PSI WSP
<b>TEMPERATURE RANGE:</b>	-29°C + 200°C



## MATERIALS LIST

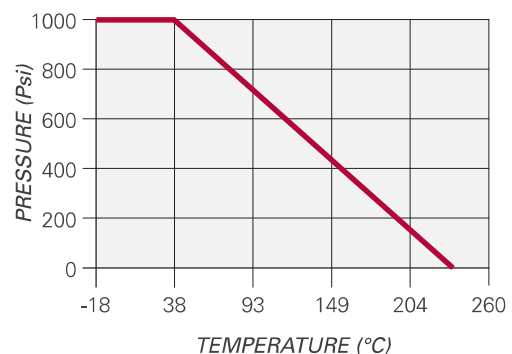
NO.	PART NAME	SPECIFICATION
1	BODY	ASTM A351 GR.CF8M
2	END CAP	ASTM A351 GR.CF8M
3	BLIND CAP	ASTM A351 GR.CF8M
4	BALL	ASTM A351 GR.CF8M
5	BALL SEATS	REINFORCED PTFE
6	STEM	STAINLESS STEEL 316
7	THRUST WASHER	REINFORCED PTFE
8	END SEAL	REINFORCED PTFE
9	STEM PACKINGS	REINFORCED PTFE
10	GLAND	STAINLESS STEEL 304
11	HANDLE	STAINLESS STEEL 304
13	HANDLE WASHER	STAINLESS STEEL 304
14	HANDLE NUT	STAINLESS STEEL 304
15	LOCKING PLATE	STAINLESS STEEL 304
16	HANDLE SLEEVE	VINYL GRIP



## DIMENSIONS (mm)

SIZE	d	L	H	D1	B	F	G	h
<b>Inch</b>								
1/2	12.7	75	59	126	71	33.5	37.5	10-24 UNC
3/4	16.0	85	64	126	81.5	39.0	42.5	10-24 UNC
1	20.0	100	80	145	102	50.5	51.5	10-24 UNC
1 1/4	25.0	115	90	145	108.5	51.0	57.5	10-24 UNC
1 1/2	32.0	125	96	204	121	58.0	63.0	1/4-20 UNC
2	38.1	148	106	204	138.5	65.5	73.0	1/4-20 UNC

## PRESSURE TEMPERATURE RATINGS



# WOG CHECK VALVE / Y STRAINER

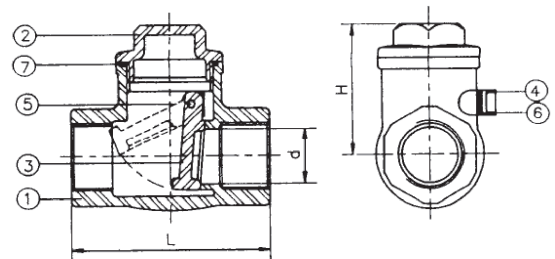
<b>SPECIFICATIONS:</b>	INVESTMENT CAST BODY & BONNET (SOLUTION TREATED) HIGH PERFORMANCE & LOW COST
<b>END TYPE:</b>	THREADED BSP OR NPT SS316 STAINLESS STEEL SCREEN / BONNETT SWING TYPE DISC
<b>APPLICATIONS:</b>	FOR GENERAL CHEMICAL & INDUSTRIAL SERVICES
<b>STEAM RATING:</b>	150 PSI WSP
<b>TEMPERATURE RANGE:</b>	+232°C MAX

## 200 WOG SWING CHECK VALVE THREADED

PRESSURE RATING: 200 PSI WOG (NON-SHOCK)

### MATERIALS LIST

NO.	PART NAME	SPECIFICATION
1	BODY	ASTM A351 GR.CF8M
2	CAP	ASTM A351 GR.CF8M
3	DISC	ASTM A351 GR.CF8M
4	PLUG	STAINLESS STEEL 316
5	PIN	STAINLESS STEEL 316
6	PLUG GASKET	PTFE
7	GASKET	PTFE



### DIMENSIONS (mm)

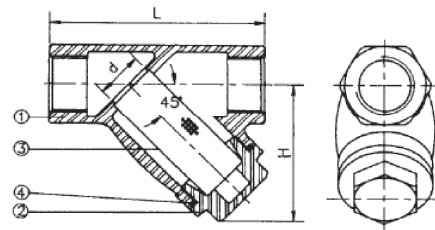
SIZE	d	L
<b>Inch</b>		
1/2	15	65
3/4	20	80
1	25	90
1 1/4	32	105
1 1/2	40	120
2	50	141

## 800 WOG Y STRAINER THREADED

PRESSURE RATING: 800 PSI WOG (NON-SHOCK)

### MATERIALS LIST

NO.	PART NAME	SPECIFICATION
1	BODY	ASTM A351 GR.CF8M
2	BOTTOM PLUG	ASTM A351 GR.CF8M
3	SCREEN	STAINLESS STEEL 316
4	GASKET	TEFLON



### DIMENSIONS (mm)

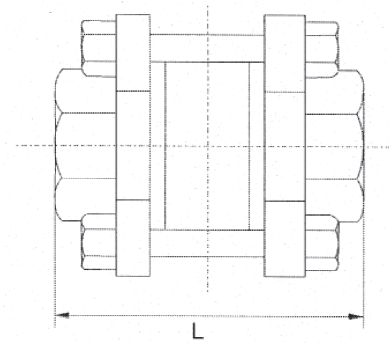
SIZE	d	L
<b>Inch</b>		
1/4	15	78
3/8	15	78
1/2	15	78
3/4	20	93
1	25	108
1 1/4	32	128
1 1/2	40	143
2	50	173

# 1000 WOG SPRING CHECK VALVE

<b>SPECIFICATIONS:</b>	3 PIECE INVESTMENT CAST BODY & END CAP
<b>END TYPE:</b>	THREADED BSP OR NPT
<b>PRESSURE RATING:</b>	1000 PSI WOG (NON SHOCK)
<b>APPLICATIONS:</b>	FOR GENERAL CHEMICAL & INDUSTRIAL SERVICES
<b>STEAM RATING:</b>	150 PSI WSP
<b>TEMPERATURE RANGE:</b>	-29°C TO 200°C MAX

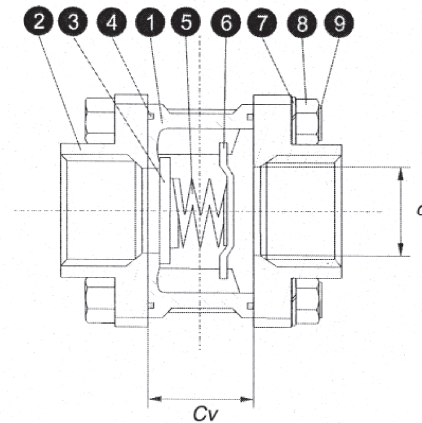
## MATERIALS LIST

NO.	PART NAME	SPECIFICATION
1	BODY	ASTM A351 GR.CF8M
2	END CAP	ASTM A351 GR.CF8M
3	DISC	STAINLESS STEEL T-316
4	BODY SEAL	15% GF PTFE
5	SPRING	STAINLESS STEEL 316
6	SPRING HOLDER	STAINLESS STEEL T-316
7	WASHER	304
8	NUT	304
9	BOLT	304



## DIMENSIONS (mm)

SIZE	d	C	L	L1
<b>Inch</b>				
1/4	11	18	65	65
3/8	13	18	65	65
1/2	15	18	65	65
3/4	20	22	70	80
1	25	28	78	88
1 1/4	32	32	96	96
1 1/2	38	37	102	107
2	50	47	118	128
2 1/2	65	47	145	150
3	80	55	156	171
4	97	70	185	215







**AUSTRALIA'S LARGEST  
INDEPENDENT  
STAINLESS STOCKISTS**

**HEAD OFFICE & COIL CENTRE**

**Street:** 56 Business Street YATALA QLD 4207  
**Postal:** PO Box 621 BEENLEIGH QLD 4207 AUSTRALIA

**P** (07) 3382 9500 | **F** (07) 3807 8150  
**E** headoffice@midwaymetals.com.au

**ALBURY**

Prospero Court ALBURY NSW 2640  
**P** (02) 6041 4000 | **F** (02) 6041 4422  
**E** albury@midwaymetals.com.au

**BRISBANE**

56 Business Street YATALA QLD 4207  
**P** (07) 3287 2811 | **F** (07) 3807 2687  
**E** brisbane@midwaymetals.com.au

**MELBOURNE**

33 Tatterson Road DANDENONG VIC 3175  
**P** (03) 9791 5111 | **F** (03) 9791 5333  
**E** melbourne@midwaymetals.com.au

**NEWCASTLE**

12 Sandringham Avenue THORNTON NSW 2322  
**P** (02) 4966 3800 | **F** (02) 4966 3811  
**E** newcastle@midwaymetals.com.au

**PERTH**

471 Victoria Road MALAGA WA 6090  
**P** (08) 9248 6944 | **F** (08) 9248 6955  
**E** perth@midwaymetals.com.au

**SYDNEY**

24-28 Lockwood Road, ERSKINE PARK NSW 2759  
**P** (02) 9670 8900 | **F** (02) 9834 2441  
**E** sydney@midwaymetals.com.au

**TOWNSVILLE**

331-335 Woolcock Street GARBUTT QLD 4814  
**P** (07) 4728 8777 | **F** (07) 4728 8778  
**E** townsville@midwaymetals.com.au

**AUCKLAND**

**P** +64 9 424 4194 | **F** +64 9 424 4194  
**E** auckland@midwaymetals.com.au

**VIETNAM**

**P** +84 3 5184 8468 | **F** +84 3 5184 8456  
**E** info@midwaymetals.com.vn

**www.midwaymetals.com.au**

ABN: 88 001 831 090

**DISCLAIMER**

The technical information contained in this publication should not be relied on for specific applications without first securing competent advice. Whilst all care is taken to ensure that the information contained herein is accurate and up-to-date, Midway Metals Pty Ltd does not warrant its accuracy or completeness and does not accept liability for errors or omissions.

**COPYRIGHT**

All rights reserved. No part of this publication may be reproduced or distributed in any form or by any means, or stored in a database or retrieval system, without prior written permission of Midway Metals.